

FORT WAYNE

WOMEN'S VOLLEYBALL

AUGUST (3-1)

19	BOWLING GREEN (EX)	L, 3-2
FORT WAYNE INVITATIONAL (AUG. 25-26)		
25	QUINNIPIAC	W, 3-2
26	SIUE	L, 3-1
26	TOLEDO	W, 3-1
29	IUPUI	W, 3-0

SEPTEMBER (0-3)

BALL STATE ACTIVE ANKLE CHALLENGE (SEPT. 1-2)		
1	vs. Bradley	L, 3-0
2	vs. Navy	L, 3-0
2	at Ball State	L, 3-0
5	WRIGHT STATE	7 P.M.
YSU INVITATIONAL (SEPT. 8-9)		
8	at Youngstown State	1 P.M.
8	vs. Akron	7 P.M.
9	vs. Saint Francis (PA)	1:30 P.M.
12	at Eastern Michigan	6 P.M.
OAKLAND INVITATIONAL (SEPT. 15-16)		
15	vs. Towson	3:30 P.M.
16	at Oakland	NOON
16	vs. Kent State	5 P.M.
22	at Oral Roberts •	8 P.M.
24	at Denver •	3 P.M.
30	SOUTH DAKOTA •	7 P.M.

OCTOBER (0-0)

1	OMAHA •	1 P.M.
8	NORTH DAKOTA STATE •	7 P.M.
10	WESTERN ILLINOIS •	1 P.M.
10	IUPUI •	7 P.M.
14	at South Dakota State •	8 P.M.
17	at Valparaiso	7 P.M.
20	ORAL ROBERTS •	7 P.M.
21	DENVER • (PinkOut)	7 P.M.
27	at South Dakota •	8 P.M.
28	at Omaha •	6 P.M.

NOVEMBER (0-0)

3	at North Dakota State •	8 P.M.
7	at Western Illinois •	7 P.M.
10	IUPUI •	7 P.M.
11	SOUTH DAKOTA STATE •	7 P.M.
SUMMIT LEAGUE TOURNAMENT (NOV. 17-19)		
17	Quarterfinals	TBD
18	Semifinals	TBD
19	Championship	TBD

• Summit League Matches

CAPS/BOLD = Home Matches | All Times Eastern

FORT WAYNE REFERENCES

As a part of the Fort Wayne athletic department's rebranding effort that began in 2016, we respectfully ask to refer to any athletic-related subjects as "Fort Wayne" or the "Fort Wayne Mastodons." Please refer to the school as "IPFW" or "Indiana University - Purdue University Fort Wayne". "IPFW" is not acceptable when referring to the athletic teams. References of "Fort Wayne University" or "University of Fort Wayne" **ARE NOT ACCEPTABLE IN ANY CONTEXT.** Please do not use "Lady 'Dons" when referring to women's teams.



GAMEDAY INFORMATION

WHEN: September 5 | 7:00 p.m.

WHERE: Fort Wayne, Ind. | Arnie Ball Court (1,800)

LIVE STATS: Fort Wayne Sidarm Live Stats

LIVE VIDEO: Fort Wayne Sidarm All-Access (Mike Maahs, play-by-play)

LIVE AUDIO: Fort Wayne Stretch Internet

SERIES HISTORY: Tied 10-10

LAST MEETING: Wright State 3, Fort Wayne 1 | Sept. 5, 2015 | Bowling Green, Ohio



FORT WAYNE MASTODONS 3-4, 0-0 SUMMIT LEAGUE

COACH: Steve Florio | 4th Season

KILLS LEADER: 85 | Nicole Rightnowar

ASSISTS LEADER: 169 | Victoria Mills

DIGS LEADER: 77 | Lizzie Britner

BLOCKS LEADER: 31 | Sydney Boerst

ACES LEADER: 8 | Katie Crowe

ATTACK % LEADER: .241 | Sydney Boerst



WRIGHT STATE RAIDERS 1-5, 0-0 HORIZON LEAGUE

COACH: Susan Clements | 6th Season

KILLS LEADER: 72 | Katie Klusman

ASSISTS LEADER: 188 | Maddie Lohmeier

DIGS LEADER: 112 | Jessie Thornton

BLOCKS LEADER: 20 | Megan Hopkins

ACES LEADER: 4 | Megan Hopkins

ATTACK % LEADER: .236 | Maddie Lohmeier

QUICK HITTERS

- The all-time series is tied 10-10
- The Mastodons had won eight straight before the Raiders snapped the streak in their previous meeting in 2015
- Fort Wayne is the only team in the league with two players in the top 15 in points, no other team has more than two (Crowe, Rightnowar, Boerst and Fuerst)
- Sydney Boerst leads the Summit League in total blocks and second in blocks per set. Liz Fuerst ranks fourth in total blocks.
- Fort Wayne is one of two team in the league with three players in the top 11 in blocks per set (Boerst, Seiler and Fuerst)
- The 'Dons are one of two teams in the league with two players in the top 7 in kills per set (Rightnowar and Crowe) and the only team with five players in the top 24 (Rightnowar, Crowe, Fuerst, Boerst and Seiler), no other team has more than three
- Fort Wayne is one of two teams in the league with four players in the top 15 in aces (Mills, Crowe, Rightnowar and Fuerst)
- As a team, the Mastodons lead the league in kills, assists, points. Second in blocks, digs, and aces

2017 FORT WAYNE VOLLEYBALL ROSTER

No.	Name	Ht.	Pos.	Cl.	Major	Hometown / Prev. School
1	Madison Jaqua (JAKE-way)	5-9	S	Jr.	Business	Kalamazoo, Mich. / Portage Central
2	Julia Wayer (where)	5-5	L	Fr.	Education	McCordsville, Ind. / Mt. Vernon
3	Lizzie Britner	5-8	L	Jr.	English	Franklin, Ind. / Roncalli
4	Tori Mills	5-6	S/DS	Jr.	Business	Elkhart, Ind. / Elkhart Memorial
5	Je'Bria Green (JUH-bree-uh)	5-11	MH	So.	Psychology	Fort Wayne, Ind. / Wayne
6	Natalie Seiler (CY-ler)	6-3	MH	Sr	Communication	Dayton, Ohio / Archbishop Alter
7	Barbie Maximiano	6-0	OH	Sr	General Studies	Florianópolis, Brazil / Monroe College
8	Liz Fuerst (first)	5-11	OH	So	Elementary Education	Arlington Heights, Ill. / John Hersey
9	Katie Crowe (crow)	5-10	OH	Fr.	Human Services	Leo, Ind. / Leo
10	Lauren Hoffman	6-0	OH	Sr.	Psychology	Monroeville, Ind. / Heritage
11	Nicole Rightnowar (Right-now-er)	5-10	OH	Jr.	Human Services	Temperance, Mich. / Bedford
12	Sydney Cox	6-2	MH	R-So.	Deciding	McCordsville, Ind. / Cathedral
13	Sydney Boerst (Boar-ST)	6-0	MH	Fr.	Biology	Sylvania, Ohio / Northview

Head Coach: Steve Florio (**Floor-E-o**)

Assistant Coach: Jasmine Fullove

Graduate Assistant Coach: Luke Furman



GoMastodons.com/WVBstats

@FortWayneWVB

@GoMastodons

#GoDons

2017 SUMMIT LEAGUE STANDINGS

(as of 9/3/2017)

Team	Summit				Overall					
	Rec.	Pct.	PF	PA	Rec.	Pct.	PF	PA	Last 10	Strk.
Denver	0-0	0.000	0	0	6-0	1.000	18	3	6-0	Won 6
North Dakota State	0-0	0.000	0	0	4-2	0.667	12	8	4-2	Won 4
Western Illinois	0-0	0.000	0	0	4-2	0.667	14	10	4-2	Lost 1
Fort Wayne	0-0	0.000	0	0	3-4	0.429	10	15	3-4	Lost 3
Omaha	0-0	0.000	0	0	2-4	0.333	6	15	2-4	Won 2
South Dakota	0-0	0.000	0	0	2-4	0.333	6	12	2-4	Won 1
Oral Roberts	0-0	0.000	0	0	1-5	0.167	6	15	1-5	Won 1
South Dakota State	0-0	0.000	0	0	1-5	0.167	6	15	1-5	Lost 5

2017 SUMMIT LEAGUE PLAYERS OF THE WEEK

Date	Player	Pos.	School	Date	Player	Pos.	School
OFFENSIVE				DEFENSIVE			
8/28	Kayla Principato	RS	Denver	8/28	Mikaela Purnell	L	North Dakota State
9/4				9/4			
9/11				9/11			
9/18				9/18			
9/25				9/25			
10/2				10/2			
10/9				10/9			
10/16				10/16			
10/23				10/23			
10/30				10/30			
11/6				11/6			
11/13				11/13			

SUMMIT LEAGUE COMPOSITE SCHEDULE

Friday, August 25

Oral Roberts 0, Purdue 3
 South Dakota St. 3, Milwaukee 0
 Tennessee St. 0, Denver 3
 Boise St. 3, North Dakota St. 0
 New Mexico 3, Omaha 0
 Alabama 3, Oral Roberts 0
 Virginia Tech 3, South Dakota St. 0
 Manhattan 2, Western Illinois 3
 South Dakota 0, Wyoming 3
 North Dakota St. 0, Arizona St. 3

Saturday, August 26

S.C. Upstate 1, Denver 3
 Idaho St. 3, South Dakota St. 1
 Portland 3, South Dakota 0
 Cleveland St. 3, Oral Roberts 2
 Omaha 0, Iowa St. 3
 Chicago St. 0, Western Illinois 3
 Kent St. 3, Omaha 0
 Weber St. 1, North Dakota St. 3
 Denver 3, Col. of Charleston 1
 Abilene Christian 0, South Dakota 3
 Evansville 2, Western Illinois 3

Thursday, August 31

Utah 3, South Dakota 0

Friday, September 01

South Dakota 0, Hawaii 3
 Saint Mary's 3, Oral Roberts 1
 Omaha 0, Iowa 3
 Indiana St. 1, Omaha 3
 Northern Colo. 0, North Dakota St. 3
 UC Davis 0, Denver 3
 Bakersfield 3, South Dakota St. 2
 Oral Roberts 0, Nebraska 3

Saturday, September 02

San Francisco 0, North Dakota St. 3
 Valparaiso 3, South Dakota St. 0
 Austin Peay 0, Western Illinois 3
 Niagara 1, Denver 3
 UMBC 0, Oral Roberts 3
 Indiana St. 2, Omaha 3
 Charleston So. 2, Western Illinois 3
 Western Carolina 0, South Dakota 3
 Eastern Illinois 0, Denver 3
 Florida A&M 1, North Dakota St. 3
 Northern Ariz. 3, South Dakota St. 0

Sunday, September 03

Western Illinois 0, UAB 3

Monday, September 04

Western Illinois at SEMO 5 p.m.

Tuesday, September 05

Oral Roberts at Arkansas 8 p.m.

Wednesday, September 06

North Dakota St. at North Dakota 8 p.m.

Thursday, September 07

Minnesota at Denver 10 a.m.
 Denver at Texas 7 p.m.
 Omaha at Drake 8 p.m.

Friday, September 08

Appalachian St. at South Dakota St. 10 a.m.
 San Jose St. at Omaha 2 p.m.
 South Dakota at Kansas City 2 p.m.
 Florida Atlantic at Oral Roberts 3:30 p.m.
 Texas A&M-Corpus Christi at Denver 5 p.m.
 George Washington at South Dakota St. 5:30 p.m.
 UNI at South Dakota 5:30 p.m.
 Montana at Omaha 6 p.m.
 Chicago St. at Western Illinois 7 p.m.

Saturday, September 09

Alabama A&M at Western Illinois 11 a.m.
 Bethune-Cookman at Oral Roberts 11 a.m.
 George Washington at North Dakota St. 11 a.m.
 Rutgers at South Dakota 12 p.m.
 South Dakota St. at North Dakota 12 p.m.
 SEMO at Omaha 2:30 p.m.
 Oral Roberts at South Florida 7 p.m.
 Appalachian St. at North Dakota St. 8 p.m.
 Western Illinois at Eastern Illinois 8 p.m.

Tuesday, September 12

Saint Louis at Western Illinois 7 p.m.

Wednesday, September 13

South Dakota St. at UIC 7 p.m.

Thursday, September 14

Kansas St. at Omaha 8 p.m.

FORT WAYNE AT A GLANCE

GENERAL INFO

Address	2101 E. Coliseum Blvd.
City/Zip	Fort Wayne, IN / 46805
Founded	1964
Enrollment	13,459
Nickname	Mastodons
Colors	Royal Blue and White
Affiliation	NCAA Division I
Conference	The Summit League
Chancellor	Vicky Carwein
Athletic Director	Kelley Hartley Hutton

MEDIA SERVICES

Asst. Director / WVB Contact	Brian Alden
E-mail	aldenbs@ipfw.edu
Office Phone	(260) 481-6646
Cell Phone	(859) 468-8963
Office Fax	(260) 481-6002

COACHING STAFF

Head Coach	Steve Florio
4rd season as HC, 15th overall at Fort Wayne	
Alma Mater 'Yr.	Saint Francis (Pa.) '98
Record at School/Yrs.	36-67 / 3
Career Record/Yrs.	36-67 / 3
Assistant Coach	Jasmine Fullove (4th season)
Graduate Assistant Coach	Luke Furman (2nd season)
Alma Mater 'Yr.	IPFW '17

SEASON IN REVIEW

2016 Overall Record	13-18
2016 Summit Record/Finish	9-7 / 4th
Letterwinners Returning/Lost	10 / 6
Starters Returning/Lost	4 / 3 (Libero)

HISTORY

First Year of Volleyball	1976
First Year of NCAA Division I Volleyball	2001
First Year in The Summit League	2007
All-Time Record	924-506-2
All-Time Division I Record	304-212
All-Time Summit League Record	104-63
NCAA Tournament Appearances	6
All-time NCAA Tournament Record	1-6
Last NCAA Tournament Appearance	2012
Result	L, 2-3 at Iowa State on Nov. 29

First Varsity Match	10/5/76 vs. Taylor (IN); L, 2-1
500th Match	9/15/89 vs. NKU; W, 3-0
750th Match	9/12/96 vs. #11 Grand Valley State; W, 3-0
1,000th Match	10/31/03 vs. Chicago State; W, 3-0
1,250th Match	10/1/11 at Southern Utah; W, 3-1

First Program Victory	10/8/76 at Indiana Tech; W, 2-0
500th Program Victory	10/11/96 at Indianapolis; W, 3-0
750th Program Victory	9/8/07 vs. Lehigh; W, 3-0



FORT WAYNE HEAD COACHES

	Career Record (Years)	Pct.
Steve Florio	36-67 (4)	.350
Kelley Hartley Hutton	314-162 (15)	.660
Tim Heffron	157-62 (6)	.717
Lisa Sheehan	87-50 (4)	.635
Arnie Ball	233-101-2 (8)	.696
Peggy Voisin	63-52 (3)	.548
Kathy Kissinger	17-7 (1)	.708
Marty Helney	16-5 (1)	.762
TOTALS	924-507-2 (41)	.646

HEAD COACH STEVE FLORIO

Head Coach Steve Florio enters his fourth season at the helm of the Fort Wayne women's volleyball program. Florio stepping into the role after former head coach Kelley Hartley Hutton was named the Fort Wayne Director of Athletics in February of 2014.

Florio enters his 15th season overall at Fort Wayne, previously serving at as associate head coach under Hartley Hutton. He has helped guide the program to a combined record of 271-178 during his time with the Mastodons, including NCAA Tournament berths in 2009 and 2012.

As the lead recruiter for the program, his recruits have earned an AVCA All-Region First Team selection and All-American Honorable Mention and a pair of All-Region Honorable Mention honors. Additionally his recruits have racked up numerous Summit League awards, including two Summit League Players of the Year, two Summit League Setters of the Year, one Summit League Defensive Player of the Year, two Summit League Newcomers of the Year, 20 All-League honorees, and seven players on the All-Freshman Team.

A native of Long Island, N.Y., Florio has had multiple items published in the AVCA Magazine "Coaching Volleyball" and his work can also be found on the "Team Talk: Talking Your Way to Volleyball Success" DVD.

Since the summer of 1993, Florio has lent his experience to camps and clinics at Illinois, Ball State, Bowling Green, Syracuse, Hofstra, Fort Wayne, the Premier Elite Camp, World Volleyball Training Center, and the Great Lakes High Performance Camp.

Prior to coming to Fort Wayne, he served four years as assistant coach at Hofstra University. While there, he assisted in leading the Pride to two conference championships, and back-to-back NCAA appearances in 1999 and 2000.

He played two years of volleyball at Nassau (N.Y.) Community College in 1994 and 1995 before transferring to NCAA Division I Saint Francis (Pa.) and playing two years for the Red Flash. At Nassau, he helped the Lions to a regional championship in 1994 and a runner-up spot in 1995. At Saint Francis, Florio served as a defensive specialist for the Red Flash.

SHE DID WHAT?...

In the Mastodon's match against Toledo, Fort Wayne libero Julia Wayer finished with two kills in the match, including the match-winner. Kill's by libero's aren't that uncommon, but having two in a match, that's a little more rare. In fact, the last time a Mastodon libero had two kills in a match was by Tessa McGill at Central Michigan on Sept. 15, 2012.

NOT 1...2...OR 3...NO NOT 4...YES 5...

The Fort Wayne women's volleyball team accomplished something that hadn't been done in nearly two decades on Aug. 25 in its season opener against Quinnipiac. Five different players recorded a double-double in the five-set win over the Bobcats. The five players were: Katie Crowe (19 kills, 13 digs), Nicole Rightnowar (17 kills, 15 digs), Liz Fuerst (13 kills, 12 digs), Sydney Boerst (12 kills, 11 blocks) and Tori Mills (53 assists, 12 digs).

The last time a quintet of Mastodons recorded a double-double in the same match came on Nov. 13, 1998 at home against Quincy with Deanna Brown (10 kills, 11 digs), Katie Bruening (13 kills, 16 digs), Laura Douglas (18 kills, 21 digs), Star Trahin (15 kills, 14 digs) and Tami Isch (53 assist, 13 digs).

On record, Fort Wayne has had five players earn a double-double on five separate occasions:

Aug. 25, 2017 vs. Quinnipiac (Katie Crowe, Nicole Rightnowar, Liz Fuerst, Tori Mills and Sydney Boerst)

Nov. 13, 1998 vs. Quincy (Deanna Brown, Katie Bruening, Laura Douglas, Star Trahin and Tami Isch)

Nov. 16, 1996 vs. Northern Kentucky (Amy Luben, Andi Reichhart, Angie Robbins, Julie Parrot and Tiffany Martin)

Oct. 26, 1994 at Ashland (Amber Borne, Amy Luben, Dottie Porch, Heather Teagarden and Julie Parrot)

Oct. 6, 1987 at Hawaii Pacific (Carla Gerardot, Shari Hanna, Julie Hefty, Joni Smith and Judy Yagodinski)

SUMMIT LEAGUE PRESEASON POLL...

The Fort Wayne women's volleyball team has been picked to finish fourth in the 2017 Summit League preseason coaches poll. The Mastodons received 33 points, two back of Oral Roberts, as coaches were not allowed to vote for their own teams.

Denver was selected as the favorite to win the 2017 volleyball crown. The Pioneers collected five first-place votes and 47 total points in the poll. South Dakota was second with 45 points and the other three first place votes.

PLAYERS TO WATCH...

Fort Wayne player Nicole Rightnowar was selected by the Summit League coaches as a 'Players to Watch' for the 2017 season.

A junior outside hitter, Rightnowar was the 2015 Summit League Freshman of the Year, and earned All-League honors last year after finishing fourth in Summit League play with 225 total kills and fifth with 3.63 kills per set. The outside hitter was also fifth in points and points per set, eighth in total digs and 11th in digs per set. Overall for the year, Rightnowar finished with a team-best 396 kills and was second on the team with 329 digs.

SEASON OPENERS...

Fort Wayne is 24-18 all-time in season-openers after defeating Quinnipiac on August 25. The Mastodons have won their season-opener six of the last seven seasons. During that run, the 'Dons also defeated Loyola Chicago (2011), Murray State (2012), Duquesne (2013), Saint Francis (Pa) (2014), and Central Michigan (2015).

The Mastodons open their season in the Gates Center for the fourth time in the last five seasons. In its history, Fort Wayne is 11-7 when starting the season at home and 28-14 all-time in home openers.

Fort Wayne vs.

2017 OPPONENTS	All-Time	Under Florio
Akron	1-1	0-0
Bradley	0-1	0-1
Ball State	5-14	1-3
Denver	2-6	1-5
Eastern Michigan	9-9	1-2
IUPUI	27-21	2-5
Kent State	3-2	0-0
Navy	0-1	0-1
North Dakota State	17-17	2-4
Oakland	31-20	1-0
Omaha	9-1	5-1
Oral Roberts	7-13	2-5
Quinnipiac	1-0	1-0
Saint Francis (PA)	5-0	2-0
SIUE	11-2	0-1
South Dakota	6-7	1-6
South Dakota State	20-6	4-2
Toledo	8-4	1-2
Towson	0-0	0-0
Valparaiso	14-11	0-3
Western Illinois	17-5	4-2
Youngstown State	2-0	1-0
TOTALS	195-141	29-43

Fort Wayne vs.

HORIZON	All-Time	Under Florio
Cleveland State	3-1	0-0
Detroit	0-0	0-0
Green Bay	4-4	0-1
IUPUI	27-21	2-5
Milwaukee	2-2	0-0
Northern Kentucky	23-19	1-1
Oakland	31-20	1-0
UIC	2-2	0-1
Wright State	10-9	0-0
Youngstown State	2-0	1-0
TOTALS	104-78	5-8

All-Time Results vs. Wright State

10/29/1982	N	Wright State	L, 1-2	Muncie, Ind.	6-15,15-4,0-15
10/7/1983	A	Wright State	L, 0-2	Dayton, Ohio	3-15,7-15
11/2/1983	A	Wright State	L, 2-3	Dayton, Ohio	15-13,3-15,15-13,7-15,9-15
10/13/1984	A	Wright State	L, 1-2	Dayton, Ohio	15-5,4-15,11-15
11/14/1984	A	Wright State	L, 1-3	Dayton, Ohio	11-15,9-15,15-8,6-15
10/12/1985	A	Wright State	L, 1-2	Dayton, Ohio	15-3,11-15,11-15
10/23/1985	H	WRIGHT STATE	W, 3-2	Fort Wayne, Ind.	12-15,15-9,16-14,9-15,16-14
11/11/1986	A	#14 Wright State	W, 3-2	Dayton, Ohio	7-15,5-15,15-9,15-12
9/23/2001	A	Wright State	L, 1-3	Dayton, Ohio	27-30,20-30,30-23,25-30
9/20/2002	H	WRIGHT STATE	L, 0-3	Fort Wayne, Ind.	27-30,32-34,21-30
9/20/2003	A	Wright State	L, 0-3	Dayton, Ohio	21-30,24-30,29-31
10/23/2004	H	WRIGHT STATE	W, 3-0	Fort Wayne, Ind.	30-25,30-26,30-26
10/15/2005	H	WRIGHT STATE	W, 3-0	Fort Wayne, Ind.	30-26,30-20,30-26
10/31/2006	A	Wright State	W, 3-0	Wright State	30-24,30-20,30-23
9/30/2008	H	WRIGHT STATE	W, 3-2	Fort Wayne, Ind.	25-17,25-13,22-25,24-26,15-10
9/29/2009	A	Wright State	W, 3-2	Dayton, Ohio	23-25,25-21,25-19,20-25,15-13
10/19/2010	H	WRIGHT STATE	W, 3-0	Fort Wayne, Ind.	25-13,25-18,25-18
8/30/2011	A	Wright State	W, 3-0	Wright State	25-22,25-17,25-19
9/4/2012	H	WRIGHT STATE	W, 3-0	Fort Wayne, Ind.	25-16,25-14,25-16
9/5/2015	N	Wright State	L, 1-3	Bowling Green, Ohio	25-17,21-25,16-25,19-25

Overall: 10-10

League: 0-0

Home: 6-1

Away: 4-7

Neutral: 0-2

RECORDS WATCH

CAREER ASSISTS

1.	5,602	Tami Isch	1997-00
2.	4,723	Megan Steenhuysen	2009-12
3.	4,650	Lindi Bankowski	2001-04
4.	4,335	Jill Lyon	1990-93
5.	4,130	Amy Luben	1994-97
6.	3,843	Kris Wilder	1987-90
7.	3,326	Jessica Dominiak	2005-08
8.	2,962	Judy Yagodinski	1983-87
9.	2,298	Madison Jaqua	2015-present
10.	2,168	Madison Spence	2011-14

CAREER BLOCKS

1.	639	Julie Hefty	1984-87
...			
9.	328	Clara Schortgen	1981-84
10.	323	Alli Hook	2008-11
11.	301	Jessica Miller	2005-08
12.	298	Emily Spencer	2011-14
13.	294	Lindsay Brammer	2001-04
	294	Rebekah Roehm	2006-09
15.	289	Sarah Heckman	2012-15
16.	288	Janna Plummer	1988-91
17.	283	Hailie Ripley	2011-14
18.	280	Maya Schlindwein	2007-10
19.	278	Linda Shank	1983-84
20.	263	Heather Teagarden	1992-95
21.	257	Connette Saylor	1981-84
22.	252	Rachel Brown	1997-99
23.	245	Natalie Seiler	2014-present

Gates Center Attendance Records

1.	11/3/2006	IUPUI	1,017
2.	9/17/2014	Ball State	1,001
3.	11/1/1996	SIUE	952
4.	9/20/2005	Ball State	914
5.	10/29/1997	St. Joseph's (IN)	842
6.	10/10/1997	SIUE	842
7.	11/9/2013	IUPUI	784
8.	10/18/2005	Eastern Michigan	737
9.	9/6/1997	Grand Valley State	720
10.	9/12/1997	Southern Indiana	695

WHY MASTODONS?...

It all started about 10,000 years ago...

That's when mastodons roamed the southern Great Lakes region of North America. These stocky versions of modern elephants reached heights of about ten feet at the shoulder, with tusks that curved upward that were six feet or more in length. Mastodons were browsers who fed mostly on leaves and twigs from small trees and shrubs.

One such mastodon found its final resting place about two miles south of Angola, Indiana, on land that would eventually become part of Orsie Routsong's farm. In the fall of 1968, Routsong decided to expand a small pond on his property. An excavator was hired and instructed to pile the excavated material around the edge of the pond. Several days after the excavation was finished a heavy rain storm pounded the piles of dirt.

The next day, a young neighbor boy of Routsong's discovered a large bone in one of the dirt piles. Routsong knew it was something out of the ordinary, so he called Jack Sunderman, chair of the IPFW Geology Department, to identify the bone, and to ask for advice on what to do with it. Sunderman says his first question was, "How big is the bone," with Routsong's answer being "pretty big, maybe 3 or 4 feet long."

When Sunderman got to the farm, he identified the bone as a leg bone of a mastodon. He told Routsong a skeleton like this would have scientific and instructional value if a large portion of it could be located. Routsong agreed, and also agreed to have the IPFW Geology Department do the excavation. Sunderman got two more faculty members, Geoffrey Matthews and Bernd Erdtmann, and several geology students to help in the project.

After all the mastodon bones were collected, cleaned, and preserved, Routsong agreed to have the adult mastodon skeleton placed on permanent display at IPFW; the skull of a nearby baby mastodon is now on loan to Science Central.

In the spring of 1970, The Communicator (IPFW's student newspaper) began a drive to come up with a mascot for IPFW. Some of the suggested choices included the Boiler-Hoosiers, Warhawks, Marauders, Frontiersmen, Pioneers, Elfs, and Hobbits. Those names and others came from student suggestions. Steve Pettyjohn, who served as the student body president in 1968-69, wrote a letter to the editor about the school mascot. In his letter, Pettyjohn extolled the virtues of choosing the mastodon as IPFW's mascot: "It sounds different, strange - that's exactly why. It's different and yes, even strange. For God's Sakes, let's have the courage to be a little different."

In the meantime, former Indiana Congressman Mark Souder, who served as student body president in 1969-70, recalls being lobbied by the Geology Club to choose the mastodon.

According to Nusbaumer, "Souder appointed a committee in student government to select a name although he was lobbying hard for the mastodon." After some discussion on the subject, Souder says a vote was taken by the committee and the mastodon came out the winner. Souder finished his recollection with these thoughts. "History shows that the advocacy of the geology club was correct. The fast, decisive action of the elected student government—though it did not please everyone and was not a precedent that the University desired to see—has also been upheld by history as IPFW regularly scores high in any list of unique university nicknames; even in this era when everybody strives to be different. We did it decades ago."

WHAT IS A MASTODON?...[ACCORDING TO WIKIPEDIA]

Mastodons are any species of extinct proboscideans (mammals with tusks and long, muscular trunks) in the genus Mammot, distantly related to elephants, that inhabited North and Central America during the late Miocene or late Pliocene up to their extinction at the end of the Pleistocene 10,000 to 11,000 years ago. Mastodons lived in herds and were predominantly forest dwelling animals that fed on a mixed diet of browsing and grazing with a seasonal preference for browsing, in contrast to living elephants that are mostly grazing animals.

Modern reconstructions based on partial and skeletal remains reveal that mastodons were very similar in appearance to elephants and, to a lesser degree, mammoths, though not closely related to either one. Compared to mammoths, mastodons had shorter legs, a longer body and were more heavily muscled, a build similar to that of the current Asian elephants. The average body size of the species was around 2.3 m (7 ft 7 in) in height at the shoulders, corresponding to a large female or a small male, but large males could grow up to 2.8 m (9 ft 2 in) in height and weigh as much as 4.5 tonnes (5 short tons).

ON THIS DATE... SEPTEMBER 5 (9-8)

1987	BUTLER	W, 3-0
1992	AT GRAND VALLEY STATE	L, 2-3
1992	VS WIS.-PARKSIDE	W, 3-1
1997	CALIFORNIA (PA)	W, 3-0
1997	ASHLAND	W, 3-2
1998	VS #18 NORTHERN COLORADO	L, 2-3
1998	VS LOCK HAVEN	W, 3-1
2003	OHIO	L, 0-3
2004	VS #4 FLORIDA	L, 0-3
2004	VS BOWLING GREEN	W, 3-0
2006	TOLEDO	W, 3-0
2008	VS FURMAN	L, 0-3
2009	VS LOUISVILLE	L, 1-3
2009	VS SIUE	W, 3-0
2014	VS BAKERSFIELD	W, 3-0
2015	VS WRIGHT STATE	L, 1-3
2015	AT BOWLING GREEN	L, 2-3

ALL-TIME RECORD... BY DAY OF THE WEEK

Sunday	31-20-1
Monday	17-6
Tuesday	104-57
Wednesday	87-22
Thursday	45-28
Friday	259-174
Saturday	379-197-1

ALL-TIME RECORD... BY MONTH

August	41-33
September	289-213-1
October	408-170-1
November	184-86
December	1-3

ALL-TIME IN SEPTEMBER... BY DAY AND LOCATION

SUNDAY	9-6-1
MONDAY	1-2
TUESDAY	29-25
WEDNESDAY	31-7
THURSDAY	5-7
FRIDAY	83-88
SATURDAY	131-79
HOME	129-51
AWAY	72-87
NEUTRAL	88-76-1

FORT WAYNE RECORDS

MOST WINS.....	34 (1984)
CONSECUTIVE WINS	16 (9/12/-10/25/1997) & (9/20-10/31/1986)
MOST HOME WINS	16 (1996)
CONSECUTIVE HOME WINS	45 (10/11/95-11/12/98)
MOST LOSSES.....	30 (1980)
CONSECUTIVE LOSSES	12 (9/23 - 10/4/1980)
LARGEST HOME CROWD.....	1,017, IUPUI, Nov. 3, 2007
ROAD ATTENDANCE.....	2,222, Southern Utah, Sept. 10, 2009
Kills.....	
TEAM SEASON	2017 (1998)
IND. SEASON.....	621, Fabiana Souza (2004)
IND. CAREER	2,305, Fabiana Souza (2002-05)
Kills Per Set.....	
TEAM SEASON	16.02 (1997)
IND. SEASON.....	5.18, Fabiana Souza (2004)
IND. CAREER	4.88, Fabiana Souza, (2002-05)
Attack attempts	
TEAM SEASON	5,708 (2006)
IND. SEASON.....	1,646, Fabiana Souza (2004)
IND. CAREER	5,837, Fabiana Souza (2002-05)
Attack pct.	
TEAM SEASON273 (1997)
IND. SEASON.....	.435, Andi Reichhart (1997)
IND. CAREER362, Andi Reichhart (1994-97)
Assists	
TEAM SEASON	1,806 (2006)
IND. SEASON.....	1,603, Tami Isch (1998)
IND. CAREER	5,602, Tami Isch (1997-00)
Assists per set.....	
TEAM SEASON	14.24 (2000)
IND. SEASON.....	13.36, Tami Isch (1998)
IND. CAREER	12.88, Tami Isch (1997-00)
Aces	
TEAM SEASON	470 (1983)
IND. SEASON.....	86, Lisa Sheehan (1983 & 1984)
IND. CAREER	247, Lisa Sheehan (1981-84)
Aces per set	
TEAM SEASON	3.22 (1983)
IND. SEASON.....	0.60, Kris Wilder (1990)
IND. CAREER	0.69, Kris Espy (1983-86)
Digs	
TEAM SEASON	2810 (1984)
IND. SEASON.....	755, Tessa McGill (2012)
IND. CAREER	2,324, Tessa McGill (2009-12)
Digs per set.....	
TEAM SEASON	25.65 (1980)
IND. SEASON.....	6.09, Tessa McGill (2012)
IND. CAREER	4.77, Tessa McGill (2009-12)
Total blocks	
TEAM SEASON	699.5 (1984)
IND. SEASON.....	212, Julie Hefty / Linda Shank (1984)
IND. CAREER	639, Julie Hefty (1984-87)
Blocks per set.....	
TEAM SEASON	4.54 (1984)
IND. SEASON.....	1.71, Julie Hefty (1986)
IND. CAREER	1.94, Julie Hefty (1984-87)
Points	
TEAM SEASON	2,966.5 (1984)
IND. SEASON.....	827.0, Clara Schortgen (1983)
IND. CAREER	2,721.0, Fabiana Souza (2002-05)
Points per set	
TEAM SEASON	20.37 (1997)
IND. SEASON.....	6.09, Fabiana Souza (2004)
IND. CAREER	5.76, Fabiana Souza (2002-05)
Sets played.....	
TEAM SEASON	154 (1984)
IND. SEASON.....	148, Jill Lyon (1993)
IND. CAREER	521, Heather Teagarden (1992-95)
Matches played	
TEAM SEASON	51 (1983)
IND. SEASON.....	39, Jami Brown / Lisa Zehr (1988)
IND. CAREER	143, Andi Reichhart (1994-97)

FORT WAYNE IN SUMMIT LEAGUE AND NCAA STATISTICS

TEAM	(of 329)		(of 9)
	NCAA		Summit
Team	Statistic	Rank	Rank
Aces Per Set	1.44	120	2
Assists Per Set	12.94	58	2
Blocks Per Set	2.19	103	3
Digs Per Set	16.13	92	6
Hitting Percentage	0.21	142	4
Kills Per Set	14	54	1

INDIVIDUAL

	NCAA	Summit
Assists Per Set		
Victoria Mills	9.2	131
Attacks Per Set		
Nicole Rightnowar	10.94	90
Blocks Per Set		
Sydney Boerst	1.44	61
Elizabeth Fuerst	1	211
Kills Per Set		
Katie Crowe	3.62	145
Points		
Katie Crowe	66.5	26
Nicole Rightnowar	66.5	26
Elizabeth Fuerst	57	71
Points Per Set		
Katie Crowe	4.16	137
Nicole Rightnowar	4.16	137
Service Aces		
Katie Crowe	6	67
Nicole Rightnowar	6	67
Elizabeth Fuerst	5	136
Total Assists		
Victoria Mills	138	36
Total Attacks		
Nicole Rightnowar	175	17
Katie Crowe	151	45
Elizabeth Fuerst	122	129
Total Blocks		
Sydney Boerst	23	11
Elizabeth Fuerst	16	66
Total Digs		
Julia Wayer	52	126
Total Kills		
Katie Crowe	57	34
Nicole Rightnowar	57	34
Elizabeth Fuerst	44	126

NCAA Rankings as Aug. 29

* NCAA rank does not include 3 schools reclassifying

ACTIVE CAREER LEADERS

Kills	Nicole Rightnowar, 818
Digs	Nicole Rightnowar , 611
Assists	Madison Jaqua, 2,298
Total Blocks	Natalie Seiler, 245
Solo Blocks	Natalie Seiler, 37
Aces	Madison Jaqua, 44
Hitting Percentage	Natalie Seiler, .276
Points	Nicole Rightnowar, 893.5
Games Played	Natalie Seiler, 74
Games Started	Madison Jaqua, 63
Sets Played	Nicole Rightnowar, 260

FORT WAYNE INDIVIDUAL GAME HIGHS

Hitting Pct. (3-sets)	.273 (16-4-44)	Nicole Rightnowar	vs IUPUI (Aug 29, 2017)
Hitting Pct. (4-sets)	.400 (14-4-25)	Sydney Boerst	vs Toledo (Aug 26, 2017)
Hitting Pct. (5-sets)	.360 (12-3-25)	Sydney Boerst	vs Quinnipiac (Aug 25, 2017)
Kills (3-sets)	16	Nicole Rightnowar	vs IUPUI (Aug 29, 2017)
Kills (4-sets)	21	Katie Crowe	vs Toledo (Aug 26, 2017)
Kills (5-sets)	19	Katie Crowe	vs Quinnipiac (Aug 25, 2017)
Attempts (3-sets)	44 (2x)	Nicole Rightnowar	vs Bradley (Sep 01, 2017)
		Nicole Rightnowar	vs IUPUI (Aug 29, 2017)
Attempts (4-sets)	51	Katie Crowe	vs Toledo (Aug 26, 2017)
Attempts (5-sets)	48	Katie Crowe	vs Quinnipiac (Aug 25, 2017)
Points (3-sets)	20.5	Nicole Rightnowar	vs IUPUI (Aug 29, 2017)
Points (4-sets)	23.0	Katie Crowe	vs Toledo (Aug 26, 2017)
Points (5-sets)	22.0	Katie Crowe	vs Quinnipiac (Aug 25, 2017)
Assists (3-sets)	25	Madison Jaqua	vs IUPUI (Aug 29, 2017)
Assists (4-sets)	36	Victoria Mills	vs SIUE (Aug 26, 2017)
Assists (5-sets)	53	Victoria Mills	vs Quinnipiac (Aug 25, 2017)
Digs (3-sets)	20	Katie Crowe	vs IUPUI (Aug 29, 2017)
Digs (4-sets)	16	Julia Wayer	vs Toledo (Aug 26, 2017)
Digs (5-sets)	17	Julia Wayer	vs Quinnipiac (Aug 25, 2017)
Aces (3-sets)	2 (3x)	MR - Katie Crowe	vs Bradley (Sep 01, 2017)
Aces (4-sets)	3	Nicole Rightnowar	vs SIUE (Aug 26, 2017)
Aces (5-sets)	2 (2x)	Katie Crowe	vs Quinnipiac (Aug 25, 2017)
	2	Elizabeth Fuerst	vs Quinnipiac (Aug 25, 2017)
Blocks (3-sets)	5	Natalie Seiler	vs IUPUI (Aug 29, 2017)
Blocks (4-sets)	5	Sydney Boerst	vs SIUE (Aug 26, 2017)
Blocks (5-sets)	11	Sydney Boerst	vs Quinnipiac (Aug 25, 2017)

OPPONENT INDIVIDUAL GAME HIGHS

Hitting Pct. (3-sets)	.444 (18-2-36)	Erica Haslag	vs Bradley (Sep 01, 2017)
Hitting Pct. (4-sets)	.370 (13- 3-27)	Emma Swope	vs Toledo (Aug 26, 2017)
Hitting Pct. (5-sets)	.211 (13- 5-38)	Kat Miller	vs Quinnipiac (Aug 25, 2017)
Kills (3-sets)	18	Erica Haslag	vs Bradley (Sep 01, 2017)
Kills (4-sets)	13	Emma Swope	vs Toledo (Aug 26, 2017)
Kills (5-sets)	15	Jen Coffey	vs Quinnipiac (Aug 25, 2017)
Attempts (3-sets)	44	Kori Waelbroeck	vs IUPUI (Aug 29, 2017)
Attempts (4-sets)	35	Saige Thomas	vs Toledo (Aug 26, 2017)
Attempts (5-sets)	49	Jen Coffey	vs Quinnipiac (Aug 25, 2017)
Points (3-sets)	20.5	Erica Haslag	vs Bradley (Sep 01, 2017)
Points (4-sets)	15.0	Taylor Joens	vs SIUE (Aug 26, 2017)
Points (5-sets)	17.0	Kat Miller	vs Quinnipiac (Aug 25, 2017)
Assists (3-sets)	35	Hannah Angeli	vs Bradley (Sep 01, 2017)
Assists (4-sets)	43	Carly Townsend	vs Toledo (Aug 26, 2017)
Assists (5-sets)	21	Morgan Sherwin	vs Quinnipiac (Aug 25, 2017)
Digs (3-sets)	17	Jessica Helms	vs IUPUI (Aug 29, 2017)
Digs (4-sets)	15	Maurissa Leonard	vs Toledo (Aug 26, 2017)
Digs (5-sets)	15	Alejandra Rodriguez	vs Quinnipiac (Aug 25, 2017)
Aces (3-sets)	1 (9x)	MR - Amber Seaman	at Ball State (Sep 02, 2017)
		Kate Avila	at Ball State (Sep 02, 2017)
Aces (4-sets)	2	Brianna Foster	vs Toledo (Aug 26, 2017)
Aces (5-sets)	3	Kat Miller	vs Quinnipiac (Aug 25, 2017)
Blocks (3-sets)	6	Abby Boatman	vs IUPUI (Aug 29, 2017)
Blocks (4-sets)	5	Taylor Joens	vs SIUE (Aug 26, 2017)
		Jackie Scott	vs SIUE (Aug 26, 2017)
		Kiana Fields	vs SIUE (Aug 26, 2017)
Blocks (5-sets)	4 (2- 2)	Elizabeth Kloos	vs Quinnipiac (Aug 25, 2017)

FORT WAYNE TEAM GAME HIGHS

Hitting Pct. (3-sets)	.172 (48-23-145)	vs IUPUI (Aug 29, 2017)
Hitting Pct. (4-sets)	.269 (62-20-156)	vs Toledo (Aug 26, 2017)
Hitting Pct. (5-sets)	.251 (67-24-171)	vs Quinnipiac (Aug 25, 2017)
Kills (3-sets)	48	vs IUPUI (Aug 29, 2017)
Kills (4-sets)	62	vs Toledo (Aug 26, 2017)
Kills (5-sets)	67	vs Quinnipiac (Aug 25, 2017)
Attempts (3-sets)	145	vs IUPUI (Aug 29, 2017)
Attempts (4-sets)	156	vs Toledo (Aug 26, 2017)
Attempts (5-sets)	171	vs Quinnipiac (Aug 25, 2017)
Assists (3-sets)	46	vs IUPUI (Aug 29, 2017)
Assists (4-sets)	56	vs Toledo (Aug 26, 2017)
Assists (5-sets)	60	vs Quinnipiac (Aug 25, 2017)
Digs (3-sets)	74	vs IUPUI (Aug 29, 2017)
Digs (4-sets)	57	vs Toledo (Aug 26, 2017)
Digs (5-sets)	83	vs Quinnipiac (Aug 25, 2017)
Aces (3-sets)	5	vs SIUE (Aug 26, 2017)
Aces (4-sets)	7	vs Toledo (Aug 26, 2017)
Aces (5-sets)	6	vs Quinnipiac (Aug 25, 2017)
Blocks (3-sets)	8.0	vs SIUE (Aug 26, 2017)
Blocks (4-sets)	8.0	vs SIUE (Aug 26, 2017)
Blocks (5-sets)	13.0	vs Quinnipiac (Aug 25, 2017)

OPPONENT TEAM GAME HIGHS

Hitting Pct. (3-sets)	.294 (44-12-109)	vs Bradley (Sep 01, 2017)
Hitting Pct. (4-sets)	.299 (51-13-127)	vs Toledo (Aug 26, 2017)
Hitting Pct. (5-sets)	.148 (54-28-176)	vs Quinnipiac (Aug 25, 2017)
Kills (3-sets)	44	vs Bradley (Sep 01, 2017)
Kills (4-sets)	51	vs Toledo (Aug 26, 2017)
Kills (5-sets)	54	vs Quinnipiac (Aug 25, 2017)
Attempts (3-sets)	128	vs IUPUI (Aug 29, 2017)
Attempts (4-sets)	127	vs Toledo (Aug 26, 2017)
Attempts (5-sets)	176	vs Quinnipiac (Aug 25, 2017)
Assists (3-sets)	42	vs Bradley (Sep 01, 2017)
Assists (4-sets)	48	vs Toledo (Aug 26, 2017)
Assists (5-sets)	48	vs Quinnipiac (Aug 25, 2017)
Digs (3-sets)	65	vs IUPUI (Aug 29, 2017)
Digs (4-sets)	67	vs Toledo (Aug 26, 2017)
Digs (5-sets)	62	vs Quinnipiac (Aug 25, 2017)
Aces (3-sets)	3 (2x)	vs Navy (Sep 01, 2017)
		vs IUPUI (Aug 29, 2017)
Aces (4-sets)	4 (2x)	vs Toledo (Aug 26, 2017)
		vs SIUE (Aug 26, 2017)
Aces (5-sets)	9	vs Quinnipiac (Aug 25, 2017)
Blocks (3-sets)	9 (2x)	vs Navy (Sep 01, 2017)
		vs IUPUI (Aug 29, 2017)
Blocks (4-sets)	14.0	vs SIUE (Aug 26, 2017)
Blocks (5-sets)	7.0	vs Quinnipiac (Aug 25, 2017)

FORT WAYNE SINGLE-MATCH RECORDS

Hitting Pct.	.750 (15-0-20)	Dottie Porch SOUTHERN INDIANA (Nov. 14, 1996)
Kills	36	Laura Douglas at Lewis (Oct. 28, 2000)
Attempts	94	Rebekah Roehm at Oakland (Oct. 2, 2009)
Points	38.5	Fabiana Souza vs. South Dakota State (Nov. 12, 2005)
Assists	84	Tami Isch at Lewis (Oct. 28, 2000)
Digs	48	Olivia Hahn at Omaha (Sept. 23, 2016)
Aces	9	Judy Yagodinski LEWIS (Oct. 3, 1985)
	9	Kris Wilder vs. Bellarmine (Oct. 13, 1990)
Block Solo	10	Lisa Zehr vs. Northern Kentucky (Nov. 22, 1986)
	10	Lisa Zehr at Butler (Sept. 9, 1986)
Block Assists	13	Kylee Hervey at IUPUI (Oct. 18, 2008)
Total Blocks	16	Julie Hefty LEWIS (Oct. 5, 1984)

Team Hitting Pct.	.535 (30-7-43)	HILLSDALE (Oct. 3, 1991)
Team Kills	96	at Lewis (Oct. 28, 2000)
Team Attempts	269	at Ball State (Nov. 10, 1987)
Team Assists	92	at Lewis (Oct. 28, 2000)
Team Digs	129	NORTH DAKOTA STATE (Nov. 16, 2007)
Team Aces	21	at Ball State (Nov. 10, 1987)
Team Block Solo	25	vs. Northern Kentucky (Nov. 22, 1986)
Team Block Assists	42	at IUPUI (Oct. 18, 2008)
Team Total Blocks	31.0	vs. Northern Kentucky (Nov. 22, 1986)

THE LAST TIME FORT WAYNE...

Team

IN THE RANKINGS

Was Ranked	No. 25, Sept. 7, 1999
Played a Ranked Team	vs. No. 17 Minnesota, Sept. 20, 2014 (L, 3-0)
Defeated a Ranked Team	vs. No. 21 Grand Valley State, Sept. 9, 2000 (W, 3-1)
Played a Top 5 team	vs. No. 4 Florida, Sept. 5, 2004 (L, 3-0)
Defeated a Top 5 team	vs. No. 5 Regis, Aug. 27, 1999 (W, 3-2)
Played a Top 10 team	at No. 8 Illinois, Dec. 3, 2009 (L, 3-0)
Defeated a Top 10 team	vs. No. 5 Regis, Aug. 27, 1999 (W, 3-2)

CONSECUTIVE MATCH STREAKS

Won 5 Consecutive Matches	Nov. 3–22, 2013
Won 10 Consecutive Matches	Oct. 1–24, 2010
Won 15+ Consecutive Matches	Sept. 12–Oct. 25, 1997 (16 straight)
Lost 5 Consecutive Matches	Oct. 17–Nov. 8, 2015 (seven)
Lost 10+ Consecutive Matches	Sept. 23–Oct. 4, 1980 (12 straight)*
.....*this is the only occurrence of 10 consecutive losses in program history	

BY SET

Won a 3-set match	vs. IUPUI, Aug. 29, 2017
Lost a 3-set match	at Ball State, Sep. 2, 2017
Won a 4-set match	vs. Toledo, Aug. 26, 2017
Lost a 4-set match	vs. SIUE, Aug. 26, 2017
Won a 5-set match	vs. Quinnipiac, Aug. 25, 2017
Lost a 5-set match	vs. North Dakota State, Nov. 4, 2016
Won an extended set	vs. Toledo, Aug. 26, 2017 (2nd set, 26-24)
Lost an extended set	at Oral Roberts, Nov. 11, 2016 (1st set, 27-29)
Won an extended 5th set	vs. Quinnipiac, Aug. 25, 2017 (17-15)
Lost an extended 5th set	at Stony Brook, Sept. 17, 2016 (14-16)

Scored ≤ 9 pts (non-5th set)	at Ball State, Sept. 4, 2013 (1st set, 7-25)
Held opponent ≤ 9 pts (non-5th set)	vs. Omaha, Sept. 22, 2016 (4th set, 25-8)
Scored ≥ 30 points	vs. American, Sept. 16, 2016 (1st set, 31-33)
Scored ≥ 35 points	at Oral Roberts, Sept. 25, 2009 (2nd set, 35-33)
Scored 10 consecutive points	vs. Omaha, Oct. 22, 2016 (15 straight)

MISCELLANEOUS

Every Player Saw Action	at No. 18 Iowa State, Nov. 29, 2012
Won After Being Down 2-0	at North Dakota State, Oct. 7, 2016
Lost After Being Up 2-0	at IUPUI, Oct. 18, 2016

KILLS

20 kills in a set	20 (2nd set), vs. IUPUI, Nov. 1, 2016
80 kills	84, at South Dakota State, Oct. 22, 2011
70 kills	71, vs. North Dakota State, Nov. 4, 2016
60 kills	62, vs. Toledo, Aug. 26, 2017
Opponent had 80 or more	82, at Western Michigan, Sept. 1, 2007

HITTING

Hit ≥ .700 in a set731 (1st set), at UMKC, Sept. 23, 2012
Hit ≥ .400 in a match409, vs. Denver, Oct. 25, 2013
Hit ≤ .050 in a match	-.071, vs. Oral Roberts, Nov. 18, 2016
Opponent hit ≥ .400 in a match404, vs. IUPUI, Sept. 29, 2015
Opponent hit ≤ .050 in a match026, at Western Illinois, Sept. 25, 2016
Opponent hit <.000 in a match	-.013, vs. South Dakota State, Sept. 28, 2014

ASSISTS

80 assists	81, at South Dakota State, Oct. 22, 2011
70 assists	76, vs. South Dakota, Nov. 14, 2015
60 assists	60, vs. Quinnipiac, Aug. 25, 2017
Opponent had 70 or more	71, vs. South Dakota, Nov. 14, 2015

ACES

10 or more	10, vs. South Dakota State, Nov. 7, 2014
5 or more	5, vs. IUPUI, Aug. 29, 2017
Opponent had 10 or more	11, at Oral Roberts, Nov. 11, 2016

DIGS

100 digs	111, vs. North Dakota State, Nov. 4, 2016
90 digs	99, at North Dakota State, Oct. 7, 2016
80 digs	83, vs. Quinnipiac, Aug. 25, 2017
70 digs	74, vs. IUPUI, Aug. 29, 2017
Opponent had 100 or more	121, vs. North Dakota State, Nov. 4, 2016

BLOCKS

15 or more	15.0, vs. Denver, Oct. 17, 2014
10 or more	10.0, vs. IUPUI, Aug. 29, 2017
Opponent had 15 or more	19.0, vs. IUPUI, Oct. 24, 2015

Individual

DOUBLE-DOUBLE

Kills-Digs	Nicole Rightnowar (11k-14d) at Ball State, Sep. 2, 2017
Kills-Blocks	Sydney Boerst (12k-11b), vs. Quinnipiac, Aug. 25, 2017
Assists-Kill	Megan Steenhuysen (46a-10k), vs. South Dakota State, Oct. 15, 2010
Assists-Digs	Tori Mills (53a-12d), vs. Quinnipiac, Aug. 25, 2017
Assists-Blocks	Has yet to happen
Digs-Blocks	Dottie Porch (14d-13b), at Ashland, Oct. 26, 1994
In Back-to-Back Matches	Nicole Rightnowar
.....	vs. IUPUI, Nov. 1, 2016 and vs. North Dakota State, Nov. 4, 2016
3 Players	vs. North Dakota State, Nov. 4, 2016
.....	Nicole Rightnowar (15k-14d), Madison Jaqua (43a-19d),
.....	and Tori Mills (16a-10d)
4 Players	at Western Illinois, Oct. 13, 2007
.....	Rebekah Roehm (19k-15d), Cynara Martins (21k-23d),
.....	Maya Schlindwein (12k-10d), and Jessica Dominiak (75a-16d)
5 Players	vs. Quinnipiac, Aug. 25, 2017
.....	Katie Crowe (19k-13d), Liz Fuerst (13k-12d), Nicole Rightnowar (17k-15d),
.....	Tori Mills (53a-12d) and Sydney Boerst (12k-11b)
Had a 20/20 Performance	Madison Jaqua (55a-20d), at IUPUI, Oct. 18, 2016

TRIPLE-DOUBLE

Kills-Digs-Assists	Julie Parrot (12k-10d-12a), at Kentucky Wesleyan, Oct. 8, 1994
Kills-Digs-Blocks	Julie Hefty (16k-10d-10b), vs. Grand Valley State, Sept. 12, 1987
Assists-Digs-Blocks	Has yet to happen

KILLS

30 or more	30, Emily Spencer, at Toledo, Sept. 19, 2014
25–29	25, Nicole Rightnowar, at Omaha, Sept. 23, 2016
20–24	21, Katie Crowe, vs. Toledo, Aug. 26, 2017
Two players with 20 or more	vs. South Dakota, Nov. 14, 2015
.....	Nicole Rightnowar (24) and Somer Johnson (21)
Opponent had 30 or more	33, Sheila Parrish, at North Dakota State, Nov. 10, 2006

Double-digit kills

3 players	vs. South Dakota, Nov. 5, 2016
.....	Lauren Hoffman (13), Somer Johnson (11), and Nicole Rightnowar (10)
4 players	vs. Toledo, Aug. 26, 2017
.....	Katie Crowe (21), Sydney Boerst (14),
.....	Nicole Rightnowar (12) and Liz Fuerst (11)
5 or more players	at Western Illinois, Nov. 1, 2013
.....	Emily Spencer (21), Sarah Heckman (14), Haillie Ripley (13),
.....	Kendall Wienkes (10), and Somer Johnson (10)

HITTING (MIN. 10 ATTEMPTS)

Hit ≥ .800 in a match	1.000 (10-0-10), Natasha Medic
.....	at South Dakota State, Oct. 30, 2016
Hit ≥ .600 in a match668 (9-1-12), Natalie Seiler at Oral Roberts, Nov. 11, 2016

ACES

8 or more	9, Kris Wilder, vs. Bellarmine, Oct. 13, 1990
7 or more	7, Kendall Wienkes, vs. Wyoming, Sept. 3, 2011
6 or more	7, Kendall Wienkes, vs. Wyoming, Sept. 3, 2011
5 or more	5, Somer Johnson, vs. South Dakota State, Nov. 7, 2014
Opponent had 5 or more	5, Vicki Wrobel, vs. Loyola-Chicago, Sept. 27, 2011

DIGS

40 or more	48, Olivia Hahn, at Omaha, Sept. 23, 2016
30–39	39, Olivia Hahn, vs. North Dakota State, Nov. 4, 2016
25–29	27, Olivia Hahn, vs. Ball State, Aug. 27, 2016
20–24	20, Katie Crowe vs. IUPUI, Aug. 29, 2017
Two players with 20 or more	at IUPUI, Oct. 18, 2016
.....	Olivia Hahn (23) and Madison Jaqua (20)
Opponent had 35 or more	41, Amanda McCormick, at Ball State, Sept. 26, 2006

Double-digit digs

3 players	, vs. IUPUI, Aug. 29, 2017
.....	Katie Crowe (20), Lizzie Britner (15) and Nicole Rightnowar (14)
4 players	vs. IUPUI, Nov. 1, 2016
.....	Nicole Rightnowar (14), Olivia Hahn (12),
.....	Somer Johnson (12), and Madison Jaqua (10),
5 or more players	vs. Quinnipiac, Aug. 25, 2017
.....	Julia Wayer (17), Nicole Rightnowar (15), Katie Crowe (13)
.....	Liz Fuerst (12) and Tori Mills (12)

BLOCKS

14 or more	14, Anna Wrede, vs. Kansas State, Sept. 13, 2014
10–13	11, Sydney Boerst, vs. Quinnipiac, Aug. 25, 2017
8–9	9, Liz Fuerst, vs. Quinnipiac, Aug. 25, 2017
Opponent had 10 or more	10, Paige Tapp, vs. #17 Minnesota, Sept. 20, 2014

2017 STARTING LINEUPS

Game							Libero
BOWLING GREEN (EX)	Mills	Seiler	Fuerst	Crowe	Boerst	Rightnowar	Britner
QUINNIPIAC	Mills	Britner	Fuerst	Crowe	Boerst	Rightnowar	Wayer
SIUE	Mills	Britner	Fuerst	Crowe	Boerst	Rightnowar	Wayer
TOLEDO	Mills	Britner	Fuerst	Crowe	Boerst	Rightnowar	Wayer
IUPUI	Mills	Seiler	Fuerst	Crowe	Boerst	Rightnowar	Britner
vs. Bradley	Mills	Seiler	Fuerst	Crowe	Boerst	Rightnowar	Britner
vs. Navy	Mills	Seiler	Fuerst	Crowe	Boerst	Rightnowar	Britner
at Ball State	Jaqua	Seiler	Fuerst	Crowe	Boerst	Rightnowar	Britner
WRIGHT STATE							
at Youngstown State							
vs. Akron							
vs. St. Francis (PA)							
at Eastern Michigan							
vs. Towson							
at Oakland							
vs. Kent State							
at Oral Roberts							
at Denver							
SOUTH DAKOTA							
OMAHA							
NORTH DAKOTA STATE							
WESTERN ILLINOIS							
at South Dakota State							
at Valparaiso							
ORAL ROBERTS							
DENVER							
at South Dakota							
at Omaha							
at North Dakota State							
at Western Illinois							
SOUTH DAKOTA STATE							

BY ROTATION

2-1	Mills	Britner	Fuerst	Crowe	Boerst	Rightnowar	Wayer
1-2	Mills	Seiler	Fuerst	Crowe	Boerst	Rightnowar	Britner
0-1	Jaqua	Seiler	Fuerst	Crowe	Boerst	Rightnowar	Britner

BY PLAYER

Mills	3-3
Britner	3-4
Fuerst	3-4
Crowe	3-4
Boerst	3-4
Rightnowar	3-4
Wayer	2-1
Seiler	1-3
Jaqua	0-1

2017 BY SET STATISTICS

Match wins by #sets	1st	2nd	3rd	4th	5th	Total
Fort Wayne	0	0	1	1	1	3
Opponents	0	0	3	1	0	4

Sets won by set	1st	2nd	3rd	4th	5th	Total
Fort Wayne	3	2	2	2	1	10
Opponents	4	5	5	1	0	15

Points by set	1st	2nd	3rd	4th	5th	Total
Fort Wayne	153	144	141	64	17	519
Opponents	159	171	169	64	15	578

FORT WAYNE WHEN...	2017	FLORIO
Overall	3-4	36-67
Home	3-1	19-21
Road	0-1	9-30
Neutral	0-2	8-16
Summit League	-	20-28
Summit League Home	-	12-13
Summit League Road	-	8-15
Against Top 25 Teams	-	0-1
In Three Sets	1-3	18-28
In Four Sets	1-1	10-23
In Five Sets	1-0	10-17
In Sets Over 25 Points (Set wins)	1-0	24-28
In Fifth Sets Over 15 Points	1-0	1-4
Following a Win	1-2	13-23
Following a Loss	1-2	20-43
Plays During the Day	0-2	11-24
Plays at Night (5pm or later)	3-2	25-43
Plays in August	3-1	9-5
Plays in September	0-3	11-30
Plays in October	-	10-20
Plays in November	-	6-12
Plays on Sunday	-	4-7
Plays on Monday	-	-
Plays on Tuesday	1-0	4-9
Plays on Wednesday	-	0-3
Plays on Thursday	-	-
Plays on Friday	0-3	14-30
Plays on Saturday	1-2	14-18
Attendance is ≤ 499	2-1	22-45
Attendance is ≥ 500	1-3	14-22
Serving First	2-4	11-26
Win First Two Sets	1-0	21-4
Lose First Two Sets	0-3	2-39
Split First Two Sets	2-1	13-24
Win Set 1	2-1	28-15
Lose Set 1	1-4	8-52
Win Set 2	2-0	27-17
Lose Set 2	1-4	9-50
Win Set 3	2-0	29-16
Lose Set 3	1-4	7-51
Win Set 4	2-0	15-9
Lose Set 4	0-1	3-29
Leading in Kills	3-1	32-19
Tied in Kills	-	0-1
Trailing in Kills	0-3	4-47
Leading in Digs	2-1	24-17
Tied in Digs	-	4-5
Trailing in Digs	1-3	8-45
Leading in Aces	2-3	25-23
Tied in Aces	-	5-7
Trailing in Aces	1-1	6-37
Leading in Blocks	2-0	25-19
Tied in Blocks	-	6-6
Trailing in Blocks	1-4	5-42
Leading in Hitting %	2-0	33-8
Tied in Hitting %	-	0-1
Trailing in Hitting %	1-4	3-58
Hitting .300 or Better	-	8-0
Hitting .200 to .299	2-0	22-26
Hitting .100 to .199	1-3	5-36
Hitting .099 or Below	0-1	0-6
Opponent Hits .300 or Better	-	0-21
Opponent Hits .200 to .299	1-2	8-35
Opponent Hits .100 to .199	1-1	17-10
Opponent Hits .099 or Below	1-0	11-1
≥ 1 player with double-double	2-1	24-37
1 or more players 20+ kills	1-0	13-15
No players 20+ kills	2-4	23-52
Longest Winning Streak	2	4
Longest Losing Streak	3	8
Current Streak	L3	

Single Game Stat Leaders

	2017	Career
TEAM LEADER IN KILLS		
Nicole Rightnowar	3	29
Lauren Hoffman	0	11
Natalie Seiler	0	4
Liz Fuerst	2	3
Katie Crowe	3	3

TEAM LEADER IN POINTS		
Nicole Rightnowar	4	28
Natalie Seiler	0	9
Lauren Hoffman	0	8
Katie Crowe	3	3
Liz Fuerst	0	1

TEAM LEADER IN ASSISTS		
Madison Jaqua	4	67
Tori Mills	3	3

TEAM LEADER IN DIGS		
Nicole Rightnowar	1	9
Julia Wayer	3	3
Madison Jaqua	0	3
Lizzie Britner	2	2
Tori Mills	0	1
Katie Crowe	1	1

TEAM LEADER IN BLOCKS		
Natalie Seiler	2	46
Lauren Hoffman	0	7
Nicole Rightnowar	0	6
Sydney Boerst	5	5
Je'Bria Green	0	2
Madison Jaqua	1	1
Katie Crowe	1	1

TEAM LEADER IN ACES		
Madison Jaqua	2	17
Natalie Seiler	0	16
Tori Mills	2	13
Nicole Rightnowar	3	12
Katie Crowe	3	3
Liz Fuerst	2	2
Lizzie Britner	1	2

Double-Doubles

	2017	Career
MADISON JAQUA	0	22

NICOLE RIGHTNOWAR	3	26
vs. Quinnipiac (17 kills, 15 digs)		
vs. IUPUI (16 kills, 14 digs)		
at Ball State (11 kills, 14 digs)		

TORI MILLS	1	4
vs. Quinnipiac (53 assists, 12 digs)		

LIZ FUERST	1	1
vs. Quinnipiac (13 kills, 12 digs)		

KATIE CROWE	2	2
vs. Quinnipiac (19 kills, 13 digs)		
vs. IUPUI (10 kills, 20 digs)		

SYDNEY BOERST	1	1
vs. Quinnipiac (12 kills, 11 blocks)		

Miscellaneous Game Stats

	2017	Career
--	------	--------

DOUBLE FIGURE KILLS		
Nicole Rightnowar	5	41
Lauren Hoffman	0	20
Natalie Seiler	1	15
Liz Fuerst	3	4
Katie Crowe	4	4
Sydney Boerst	2	2

DOUBLE FIGURE DIGS		
Nicole Rightnowar	4	33
Madison Jaqua	0	22
Tori Mills	1	7
Lizzie Britner	4	4
Julia Wayer	3	3
Katie Crowe	2	2
Liz Fuerst	1	1

THREE ACES OR MORE		
Natalie Seiler	0	4
Madison Jaqua	0	2
Nicole Rightnowar	0	1
Tori Mills	0	1

FIVE BLOCKS OR MORE		
Natalie Seiler	1	22
Lauren Hoffman	0	4
Sydney Boerst	2	2
Liz Fuerst	1	1
Je'Bria Green	0	1
Nicole Rightnowar	0	1

Miscellaneous Game Stats

SCORES FIRST (by Set)	
Fort Wayne	13
Opponents	11

HOW FORT WAYNE SCORED FIRST POINT (by set)	
Ace	1
Kill	15
Block	0
Attack/Service Error	9

FIRST FORT WAYNE POINT SCORED BY (by set)	
Nicole Rightnowar	7
Katie Crowe	6
Liz Fuerst	5
Sydney Boerst	3
Barbie Maximiano	1
Natalie Seiler	1
Madison Jaqua	1
Tori Mills	1

SCORING RUNS OF 5-0 OR BETTER	
Fort Wayne	10
Opponents	9

COIN TOSS WON BY	
Fort Wayne	4
Opponents	3

FORT WAYNE'S FIRST SUBSTITUTION (by set)	
Lizzie Britner	6
Madison Jaqua	6
Tori Mills	5
Lauren Hoffman	4
Julia Wayer	2
Liz Fuerst	1

MOST CONSECUTIVE POINTS	
6, three times MR - (3rd set, at Ball State, Sep. 2)	

MOST CONSECUTIVE POINTS BY OPP.	
8 (3rd set, vs. Navy, Sep. 1)	

LONGEST WINNING STREAK	
2 (Aug. 26-present)	

LONGEST LOSING STREAK	
3 (Sep. 1-present)	

LARGEST HOME CROWD	
572 (twice)	

LARGEST ROAD CROWD	
408, at Ball State (Sep 2)	

MOST LEAD CHANGES	
24, vs. Quinnipiac (Aug. 25)	

MOST TIE SCORES	
44, vs. Quinnipiac (Aug. 25)	

LONGEST MATCH	
2:19 vs. Quinnipiac (Aug. 25)	

SHORTEST MATCH	
1:15 vs. Bradley (Sep. 1)	



SEASON HIGH	CATEGORY	CAREER HIGH
1, vs. Navy, 9/1/2017	Kills	6, two times
2, vs. Toledo, 8/26/2017	Attempts	12, at Valparaiso, 10/21/2015
25, vs. IUPUI, 8/29/2017	Assists	68, vs IUPUI, 10/25/2015
1, two times	Aces	4, vs. South Dakota State, 10/14/2016
6, two times	Digs	21, at Ball State, 9/16/2015
—	Solo Blocks	1, four times
4, vs. Toledo, 8/26/2017	Total Blocks	4, vs. Toledo, 8/26/2017

- 2015, 2016-17 Summit League Academic Honor Roll
- 2016-17 Commissioner's List of Academic Excellence
- 2015 Summit League All-Freshman Team
- 2015 Summit League Distinguished Scholar
- 2014 Michigan High School Miss Volleyball Finalist

CAREER VS. WRIGHT STATE

Season	sp-mp	k	k/s	e	ta	pct	a	a/s	sa	sa/s	se	dig	d/s	re	bs	ba	tb	b/s	be	bhe	pts	pts/s
2015	4-1	2	0.50	0	2	1.000	20	5.00	1	0.25	0	5	1.25	0	0	0	0	0.00	0	0	3.0	0.75
TOTAL	4-1	2	0.50	0	2	1.000	20	5.00	1	0.25	0	5	1.25	0	0	0	0	0.00	0	0	3.0	0.75

SINGLE-MATCH HIGHS [all-time ranking]:

Kills: 2, vs Wright State, Sep 05, 2015

Attacks: 2, vs Wright State, Sep 05, 2015

Assists: 20, vs Wright State, Sep 05, 2015

Serve aces: 1, vs Wright State, Sep 05, 2015

Digs: 5, vs Wright State, Sep 05, 2015

SEASON STATS

		attack						set						serve						recept						dig						blocking								team	
Date	Opponent	sp	k	e	ta	pct	a	ta	pct	sa	se	ta	pct	re	ta	pct	bs	ba	be	tb	total	bhe	points	hit%	score																
Aug 26, 2017	SIUE	1	0	1	1	-1.000	5	-	-	0	0	-	-	0	-	-	0	0	0	1	0.0	1	0.0	.131	1-3																
Aug 26, 2017	TOLEDO	3	0	0	2	.000	18	-	-	0	0	-	-	0	-	-	2	0	4	0	4.0	0	2.0	.269	3-1																
Aug 29, 2017	IUPUI	2	0	1	1	-1.000	25	-	-	0	1	-	-	0	-	-	3	0	0	0	0.0	0	0.0	.172	3-0																
Sep 01, 2017	vs Bradley	3	0	0	0	.000	19	-	-	0	0	-	-	0	-	-	6	0	0	0	0.0	0	0.0	.157	0-3																
Sep 01, 2017	vs Navy	3	1	0	1	1.000	17	-	-	1	1	-	-	0	-	-	2	0	0	0	0.0	0	2.0	.103	0-3																
Sep 02, 2017	at Ball State	*3	0	1	1	-1.000	24	-	-	1	0	-	-	0	-	-	6	0	0	0	0.0	1	1.0	.052	0-3																
Totals		15	1	3	6	-.333	108	-	-	2	2	-	-	0	-	-	19	0	4	1	4.0	2	5.0																		

Sets played: 15
Kills per set: 0.07
Assists per set: 7.20

Service aces per set: 0.13
Digs per set: 1.27
Blocks per set: 0.27

Points per set: 0.33

CAREER STATS

Season	sp-mp	k	k/s	e	ta	pct	a	a/s	sa	sa/s	se	dig	d/s	re	bs	ba	tb	b/s	be	bhe	pts	pts/s
2015	119-32	44	0.37	8	107	.336	1078	9.06	18	0.15	13	269	2.26	0	3	20	23	0.19	0	14	75.0	0.63
2016	118-31	51	0.43	11	117	.342	1112	9.42	24	0.20	32	267	2.26	0	1	12	13	0.11	1	15	82.0	0.69
2017	15-6	1	0.07	3	6	-.333	108	7.20	2	0.13	2	19	1.27	0	0	4	4	0.27	1	2	5.0	0.33
TOTAL	252-69	96	0.38	22	230	.322	2298	9.12	44	0.17	47	555	2.20	0	4	36	40	0.16	2	31	162.0	0.64



SEASON HIGH	CATEGORY	CAREER HIGH
2, vs. Toledo, 8/26/2017	Kills	2, vs. Toledo, 8/26/2017
2, vs. Toledo, 8/26/2017	Attempts	2, vs. Toledo, 8/26/2017
2, two times	Assists	2, two times
1, vs. Toledo, 8/26/2017	Aces	1, vs. Toledo, 8/26/2017
17, vs. Quinnipiac, 8/25/2017	Digs	17, vs. Quinnipiac, 8/25/2017
—	Solo Blocks	—
—	Total Blocks	—

• 2016 Indiana Coaches of Girls Sports Association Class 4A All-State Second Team

SEASON STATS

Date	Opponent	sp	attack				set			serve				recept			blocking					bhe	points	team hit%	score
			k	e	ta	pct	a	ta	pct	sa	se	ta	pct	re	ta	pct	dig	bs	ba	be	total				
Aug 25, 2017	QUINNIPIAC	5	0	1	1	.000	2	-	-	0	1	-	-	0	-	-	17	0	0	0	0.0	0	0.0	.251	3-2
Aug 26, 2017	SIUE	4	0	0	0	.000	0	-	-	0	2	-	-	0	-	-	14	0	0	0	0.0	0	0.0	.131	1-3
Aug 26, 2017	TOLEDO	4	2	0	2	1.000	1	-	-	1	3	-	-	1	-	-	16	0	0	0	0.0	0	3.0	.269	3-1
Aug 29, 2017	IUPUI	3	0	0	0	.000	0	-	-	0	0	-	-	0	-	-	5	0	0	0	0.0	0	0.0	.172	3-0
Sep 01, 2017	vs Bradley	1	0	0	0	.000	2	-	-	0	0	-	-	0	-	-	6	0	0	0	0.0	0	0.0	.157	0-3
Sep 01, 2017	vs Navy	1	0	0	0	.000	0	-	-	0	0	-	-	1	-	-	0	0	0	0	0.0	0	0.0	.103	0-3
Sep 02, 2017	at Ball State	2	0	0	0	.000	0	-	-	0	0	-	-	0	-	-	0	0	0	0	0.0	0	0.0	.052	0-3
		20	2	1	3	.333	5	-	-	1	6	-	-	2	-	-	58	0	0	0	0.0	0	3.0		

Sets played: 20
 Kills per set: 0.10
 Assists per set: 0.25

Service aces per set: 0.05
 Digs per set: 2.90

Points per set: 0.15

CAREER STATS

Season	sp-mp	k	k/s	e	ta	pct	a	a/s	sa	sa/s	se	dig	d/s	re	bs	ba	tb	b/s	be	bhe	pts	pts/s
2017	20-7	2	0.10	1	3	.333	5	0.25	1	0.05	6	58	2.90	2	0	0	0	0.00	0	0	3.0	0.15
TOTAL	20-7	2	0.10	1	3	.333	5	0.25	1	0.05	6	58	2.90	2	0	0	0	0.00	0	0	3.0	0.15



SEASON HIGH	CATEGORY	CAREER HIGH
7, vs. SIUE, 8/26/2017	Kills	7, vs. SIUE, 8/26/2017
15, vs. SIUE, 8/26/2017	Attempts	15, vs. SIUE, 8/26/2017
2, four times	Assists	2, six times
2, vs. IUPUI, 8/29/2017	Aces	2, two times
15, vs. IUPUI, 8/29/2017	Digs	15, vs. IUPUI, 8/29/2017
—	Solo Blocks	—
1, vs. SIUE, 8/26/2017	Total Blocks	1, vs. SIUE, 8/26/2017

- 2015 Summit League Distinguished Scholar
- 2015, 2016-17 Summit League Academic Honor Roll
- 2016-17 Commissioner's List of Academic Excellence

CAREER VS. WRIGHT STATE

Season	sp-mp	k	k/s	e	ta	pct	a	a/s	sa	sa/s	se	dig	d/s	re	bs	ba	tb	b/s	be	bhe	pts	pts/s
2015	1-1	0	0.00	0	0	.000	0	0.00	0	0.00	0	1	1.00	0	0	0	0	0.00	0	0	0.0	0.00
TOTAL	1-1	0	0.00	0	0	.000	0	0.00	0	0.00	0	1	1.00	0	0	0	0	0.00	0	0	0.0	0.00

SINGLE-MATCH HIGHS [all-time ranking]:

Digs: 1, vs Wright State, Sep 05, 2015

SEASON STATS

Date	Opponent	sp	k	e	ta	pct	a	ta	pct	sa	se	ta	pct	re	ta	pct	dig	bs	ba	tb	b/s	be	bhe	points	hit%	score
Aug 25, 2017	QUINNIPIAC	*5	0	0	0	.000	1	-	-	0	1	-	-	2	-	-	8	0	0	0	0.0	0	0	0.0	.251	3-2
Aug 26, 2017	SIUE	*4	7	1	15	.400	2	-	-	0	4	-	-	0	-	-	8	0	1	0	1.0	0	0	7.5	.131	1-3
Aug 26, 2017	TOLEDO	*4	0	1	4	-.250	0	-	-	0	4	-	-	0	-	-	8	0	0	0	0.0	0	0	0.0	.269	3-1
Aug 29, 2017	IUPUI	3	0	0	0	.000	2	-	-	2	2	-	-	0	-	-	15	0	0	0	0.0	0	0	2.0	.172	3-0
Sep 01, 2017	vs Bradley	3	0	0	0	.000	2	-	-	0	2	-	-	0	-	-	11	0	0	0	0.0	0	0	0.0	.157	0-3
Sep 01, 2017	vs Navy	3	0	0	0	.000	0	-	-	0	2	-	-	0	-	-	14	0	0	0	0.0	0	0	0.0	.103	0-3
Sep 02, 2017	at Ball State	3	0	0	0	.000	2	-	-	1	4	-	-	0	-	-	13	0	0	0	0.0	0	0	1.0	.052	0-3
		25	7	2	19	.263	9	-	-	3	19	-	-	2	-	-	77	0	1	0	1.0	0	0	10.5		

Sets played: 25
Kills per set: 0.28
Assists per set: 0.36

Service aces per set: 0.12
Digs per set: 3.08
Blocks per set: 0.04

Points per set: 0.42

CAREER STATS

Season	sp-mp	k	k/s	e	ta	pct	a	a/s	sa	sa/s	se	dig	d/s	re	bs	ba	tb	b/s	be	bhe	pts	pts/s
2015	43-19	0	0.00	2	4	-.500	6	0.14	1	0.02	11	70	1.63	8	0	0	0	0.00	0	0	1.0	0.02
2016	30-14	0	0.00	0	1	.000	2	0.07	3	0.10	9	25	0.83	3	0	0	0	0.00	0	0	3.0	0.10
2017	25-7	7	0.28	2	19	.263	9	0.36	3	0.12	19	77	3.08	2	0	1	1	0.04	0	0	10.5	0.40
TOTAL	98-40	7	0.07	4	24	.125	17	0.17	7	0.07	39	172	1.76	13	0	1	1	0.01	0	0	14.5	0.14



TORI MILLS
 Junior | 5-6
 Elkhart, Ind.
 Elkhart Memorial H.S.
SETTER / DEFENSIVE SPECIALIST

SEASON HIGH	CATEGORY	CAREER HIGH
2, three times	Kills	2, three times
6, vs. Toledo, 8/26/2017	Attempts	6, vs. Toledo, 8/26/2017
53, vs. Quinnipiac, 8/25/2017	Assists	53, vs. Quinnipiac, 8/25/2017
2, vs. Quinnipiac, 8/25/2017	Aces	3, vs. Omaha, 10/22/2016
12, vs. Quinnipiac, 8/25/2017	Digs	15, at Omaha, 9/23/2016
—	Solo Blocks	1, at Indiana State, 9/12/2015
2, vs. SIUE, 8/26/2017	Total Blocks	2, vs. SIUE, 8/26/2017

- 2015, 2016-17 Summit League Academic Honor Roll
- 2016-17 Media Services Student-Worker of the Year

CAREER VS. WRIGHT STATE

Season	sp-mp	k	k/s	e	ta	pct	a	a/s	sa	sa/s	se	dig	d/s	re	bs	ba	tb	b/s	be	bhe	pts	pts/s
2015	4-1	0	0.00	0	0	.000	0	0.00	2	0.50	1	1	0.25	0	0	0	0	0.00	0	0	2.0	0.50
TOTAL	4-1	0	0.00	0	0	.000	0	0.00	2	0.50	1	1	0.25	0	0	0	0	0.00	0	0	2.0	0.50

SINGLE-MATCH HIGHS [all-time ranking]:

Serve aces: 2, vs Wright State, Sep 05, 2015

Digs: 1, vs Wright State, Sep 05, 2015

SEASON STATS

Date	Opponent	sp	k	e	ta	pct	a	ta	pct	sa	se	ta	pct	re	ta	pct	dig	bs	ba	be	total	bhe	points	hit%	team score
Aug 25, 2017	QUINNIPAC	*5	2	0	3	.667	53	-	-	2	2	-	-	0	-	-	12	0	2	2	1.0	0	4.5	.251	3-2
Aug 26, 2017	SIUE	*4	2	0	4	.500	36	-	-	0	4	-	-	0	-	-	3	0	2	0	2.0	0	3.0	.131	1-3
Aug 26, 2017	TOLEDO	*4	2	1	6	.167	33	-	-	1	4	-	-	1	-	-	8	0	0	0	0.0	0	3.0	.269	3-1
Aug 29, 2017	IUPUI	*2	1	1	2	.000	16	-	-	0	0	-	-	0	-	-	5	0	0	0	0.0	0	1.0	.172	3-0
Sep 01, 2017	vs Bradley	*3	1	0	4	.250	12	-	-	1	1	-	-	0	-	-	5	0	0	0	0.0	1	2.0	.157	0-3
Sep 01, 2017	vs Navy	*3	0	0	0	.000	16	-	-	1	2	-	-	0	-	-	3	0	0	0	0.0	0	1.0	.103	0-3
Sep 02, 2017	at Ball State	3	0	0	0	.000	3	-	-	0	0	-	-	0	-	-	4	0	0	0	0.0	0	0.0	.052	0-3
		24	8	2	19	.316	169	-	-	5	13	-	-	1	-	-	40	0	3	2	3.0	1	14.5		

Sets played: 24
 Kills per set: 0.33
 Assists per set: 7.04

Service aces per set: 0.21
 Digs per set: 1.67
 Blocks per set: 0.12

Points per set: 0.60

CAREER STATS

Season	sp-mp	k	k/s	e	ta	pct	a	a/s	sa	sa/s	se	dig	d/s	re	bs	ba	tb	b/s	be	bhe	pts	pts/s
2015	50-23	0	0.00	0	2	.000	19	0.38	8	0.16	10	64	1.28	5	1	0	1	0.02	0	1	9.0	0.18
2016	115-31	0	0.00	3	11	-.273	201	1.75	18	0.16	38	208	1.81	10	0	0	0	0.00	0	7	18.0	0.16
2017	24-7	8	0.33	2	19	.316	169	7.04	5	0.21	13	40	1.67	1	0	3	3	0.12	2	1	14.5	0.58
TOTAL	189-61	8	0.04	5	32	.094	389	2.06	31	0.16	61	312	1.65	16	1	3	4	0.02	2	9	41.5	0.22



SEASON HIGH	CATEGORY	CAREER HIGH
11, vs. IUPUI, 8/29/2017	Kills	14, at Stony Brook, 9/17/2016
21, vs. IUPUI, 8/29/2017	Attempts	27, vs. North Dakota State, 11/4/2016
—	Assists	2, three times
—	Aces	4, vs. Ball State, 8/27/2016
5, two times	Digs	7, at Omaha, 9/23/2016
1, vs. IUPUI, 8/29/2017	Solo Blocks	5, at North Dakota State, 10/7/2016
5, vs. IUPUI, 8/29/2017	Total Blocks	10, vs. Central Michigan, 8/28/2015

- 2016 Summit League Honorable Mention
- Named Summit League Defensive Player of the Week (10/3/16)

CAREER VS. WRIGHT STATE

Season	sp	mp	k	k/s	e	ta	pct	a	a/s	sa	sa/s	se	dq	d/s	re	bs	ba	tb	b/s	be	bhe	pts	pts/s
2015	4-1		0	0.00	4	10	-400	0	0.00	0	0.00	0	1	0.25	0	0	3	3	0.75	1	0	1.5	0.25
TOTAL	4-1		0	0.00	4	10	-400	0	0.00	0	0.00	0	1	0.25	0	0	3	3	0.75	1	0	1.5	0.25

SINGLE-MATCH HIGHS [all-time ranking]:

Attacks: 10, vs Wright State, Sep 05, 2015

Digs: 1, vs Wright State, Sep 05, 2015


Blocks: 3, vs Wright State, Sep 05, 2015

Block assist: 3, vs Wright State, Sep 05, 2015

CAREER STATS

Season	sp-mp	k	k/s	e	ta	pct	a	a/s	sa	sa/s	se	dig	d/s	re	bs	ba	tb	b/s	be	bhe	pts	pts/s
2014	11-7	4	0.36	1	12	.250	0	0.00	0	0.00	0	1	0.09	1	0	2	2	0.18	2	0	5.0	0.45
2015	114-32	158	1.39	74	425	.198	6	0.05	12	0.11	33	35	0.31	4	19	96	115	1.01	15	1	237.0	2.08
2016	120-31	256	2.13	70	535	.348	10	0.08	23	0.19	57	53	0.44	2	17	101	118	0.98	10	4	346.5	2.88
2017	12-4	23	1.92	11	60	.200	0	0.00	0	0.00	3	14	1.17	0	1	9	10	0.83	1	0	28.5	2.33
TOTAL	257-74	441	1.72	156	1032	.276	16	0.06	35	0.14	93	103	0.40	7	37	208	245	0.95	28	5	617.0	2.40





7

BARBIE

MAXIMIANO

Senior | 6-0

Florianópolis, Brazil

EEB Getulio Vargas

Monroe College

OUTSIDE HITTER

SEASON HIGH	CATEGORY	CAREER HIGH
4, vs. Quinnipiac, 8/25/2017	Kills	4, vs. Quinnipiac, 8/25/2017
20, vs. Quinnipiac, 8/25/2017	Attempts	20, vs. Quinnipiac, 8/25/2017
—	Assists	—
—	Aces	—
4, vs. Quinnipiac, 8/25/2017	Digs	7, vs. Northern Kentucky, 9/3/2016
—	Solo Blocks	—
2, vs. Quinnipiac, 8/25/2017	Total Blocks	2, vs. Quinnipiac, 8/25/2017

- Played two season at Monroe College (NJCAA) in Bronx, New York.
- Finished 2015 season 21st in the NJCAA Division I in kills per set, 21st in hitting percentage and 21st in points per set

SEASON STATS

Date	Opponent	sp	attack				set			serve				recept			blocking				team				
			k	e	ta	pct	a	ta	pct	sa	se	ta	pct	re	ta	pct	dig	bs	ba	be	total	bhe	points	h%t	score
Aug 25, 2017	QUINNIPAC	5	4	4	20	.000	0	-	-	0	0	-	-	0	-	-	4	0	2	0	2.0	0	5.0	.251	3-2
		5	4	4	20	.000	0	-	-	0	0	-	-	0	-	-	4	0	2	0	2.0	0	5.0		

Sets played: 5
Kills per set: 0.80

Digs per set: 0.80
Blocks per set: 0.40

Points per set: 1.00

CAREER STATS

Season	sp-mp	k	k/s	e	ta	pct	a	a/s	sa	sa/s	se	dig	d/s	re	bs	ba	tb	b/s	be	bhe	pts	pts/s
2016	17-11	14	0.82	7	66	.106	0	0.00	0	0.00	2	16	0.94	1	0	3	3	0.18	0	0	15.5	0.88
2017	5-1	4	0.80	4	20	.000	0	0.00	0	0.00	0	4	0.80	0	0	2	2	0.40	0	0	5.0	1.00
TOTAL	22-12	18	0.82	11	86	.081	0	0.00	0	0.00	2	20	0.91	1	0	5	5	0.23	0	0	20.5	0.91



LIZ
FUERST

Sophomore | 6-0
Arlington Heights, Ill.
John Hersey H.S.

OUTSIDE HITTER

SEASON HIGH	CATEGORY	CAREER HIGH
13, two times	Kills	13, two times
37, vs. IUPUI, 8/29/2017	Attempts	37, vs. IUPUI, 8/29/2017
2, vs. IUPUI, 8/29/2017	Assists	2, vs. IUPUI, 8/29/2017
2, two times	Aces	2, two times
12, vs. Quinnipiac, 8/25/2017	Digs	12, vs. Quinnipiac, 8/25/2017
—	Solo Blocks	1, at Denver, 10/28/2016
9, vs. Quinnipiac, 8/25/2017	Total Blocks	9, vs. Quinnipiac, 8/25/2017

- 2016-17 Summit League Academic Honor Roll
- 2014 IHSA All-State Honorable Mention
- Mother, Daiva, was a three-time AVCA First Team All-American at UCLA and was a member of the U.S. National Team from 1989-1994. Father, Jeff, played basketball at Miami (Ohio)

SEASON STATS

Date	Opponent	sp	k	e	ta	pct	a	ta	pct	sa	se	ta	pct	re	ta	pct	dig	bs	ba	be	total	bhe	points	team hit%	score
Aug 25, 2017	QUINNIPIAC	*5	13	5	34	.235	1	-	-	2	1	-	-	2	-	-	12	0	9	1	9.0	0	19.5	.251	3-2
Aug 26, 2017	SIUE	*4	13	4	29	.310	0	-	-	0	1	-	-	1	-	-	5	0	2	0	2.0	0	14.0	.131	1-3
Aug 26, 2017	TOLEDO	*4	11	4	22	.318	0	-	-	2	1	-	-	0	-	-	7	0	1	0	1.0	0	13.5	.269	3-1
Aug 29, 2017	IUPUI	*3	7	7	37	.000	2	-	-	1	2	-	-	1	-	-	7	0	4	0	4.0	0	10.0	.172	3-0
Sep 01, 2017	vs Bradley	*3	9	4	22	.227	0	-	-	1	1	-	-	1	-	-	3	1	1	0	2.0	0	11.5	.157	0-3
Sep 01, 2017	vs Navy	*3	4	1	13	.231	0	-	-	0	0	-	-	0	-	-	4	0	1	0	1.0	0	4.5	.103	0-3
Sep 02, 2017	at Ball State	*3	7	7	33	.000	0	-	-	0	1	-	-	0	-	-	8	0	0	0	0.0	0	7.0	.052	0-3
		25	64	32	190	.168	3	-	-	6	7	-	-	5	-	-	46	1	18	1	19.0	0	80.0		

Sets played: 25
Kills per set: 2.56
Assists per set: 0.12

Service aces per set: 0.24
Digs per set: 1.84
Blocks per set: 0.76

Points per set: 3.20

CAREER STATS

Season	sp-mp	k	k/s	e	ta	pct	a	a/s	sa	sa/s	se	dig	d/s	re	bs	ba	tb	b/s	be	bhe	pts	pts/s
2016	54-26	55	1.02	32	158	.146	0	0.00	0	0.00	0	6	0.11	0	1	10	11	0.20	2	0	61.0	1.13
2017	25-7	64	2.56	32	190	.168	3	0.12	6	0.24	7	46	1.84	5	1	18	19	0.76	1	0	80.0	3.20
TOTAL	79-33	119	1.51	64	348	.158	3	0.04	6	0.08	7	52	0.66	5	2	28	30	0.38	3	0	141.0	1.78



9

KATIE CROWE

Freshman | 5-10

Leo, Ind.

Leo H.S.

OUTSIDE HITTER

SEASON HIGH	CATEGORY	CAREER HIGH
21, vs. Toledo, 8/26/2017	Kills	21, vs. Toledo, 8/26/2017
51, vs. Toledo, 8/26/2017	Attempts	51, vs. Toledo, 8/26/2017
2, vs. Toledo, 8/26/2017	Assists	2, vs. Toledo, 8/26/2017
2, four times	Aces	2, four times
20, vs. IUPUI, 8/29/2017	Digs	20, vs. IUPUI, 8/29/2017
1, three times	Solo Blocks	1, three times
3, two times	Total Blocks	3, two times

• Two-time All-Northeast 8 Conference First Team selection

SEASON STATS

Date	Opponent	sp	k	e	ta	pct	a	ta	pct	sa	se	ta	pct	re	ta	pct	dig	bs	ba	be	total	bhe	points	hit%	team score
Aug 25, 2017	QUINNIPIAC	*5	19	8	48	.229	0	-	-	2	4	-	-	3	-	-	13	1	0	0	1.0	0	22.0	.251	3-2
Aug 26, 2017	SIUE	*4	7	8	22	-.045	0	-	-	2	1	-	-	1	-	-	8	1	2	0	3.0	0	11.0	.131	1-3
Aug 26, 2017	TOLEDO	*4	21	6	51	.294	2	-	-	2	5	-	-	0	-	-	8	0	0	1	0.0	0	23.0	.269	3-1
Aug 29, 2017	IUPUI	*3	10	6	30	.133	1	-	-	0	2	-	-	1	-	-	20	0	1	0	1.0	0	10.5	.172	3-0
Sep 01, 2017	vs Bradley	*3	7	2	16	.312	1	-	-	2	4	-	-	0	-	-	5	0	1	0	1.0	0	9.5	.157	0-3
Sep 01, 2017	vs Navy	*3	10	9	37	.027	0	-	-	0	2	-	-	1	-	-	6	0	1	1	1.0	0	10.5	.103	0-3
Sep 02, 2017	at Ball State	*3	8	7	29	.034	0	-	-	0	1	-	-	1	-	-	5	1	2	1	3.0	0	10.0	.052	0-3
		25	82	46	233	.155	4	-	-	8	19	-	-	7	-	-	65	3	7	3	10.0	0	96.5		

Sets played: 25
Kills per set: 3.28
Assists per set: 0.16

Service aces per set: 0.32
Digs per set: 2.60
Blocks per set: 0.40

Points per set: 3.86

CAREER STATS

Season	sp-mp	k	k/s	e	ta	pct	a	a/s	sa	sa/s	se	dig	d/s	re	bs	ba	tb	b/s	be	bhe	pts	pts/s
2017	25-7	82	3.28	46	233	.155	4	0.16	8	0.32	19	65	2.60	7	3	7	10	0.40	3	0	96.5	3.84
TOTAL	25-7	82	3.28	46	233	.155	4	0.16	8	0.32	19	65	2.60	7	3	7	10	0.40	3	0	96.5	3.84



LAUREN HOFFMAN **10**

Senior | 6-0
Monroeville, Ind.
Heritage H.S.

OUTSIDE HITTER

SEASON HIGH	CATEGORY	CAREER HIGH
5, vs. Navy, 9/1/2017	Kills	18, vs. North Dakota State, 11/4/2016
8, vs. Navy, 9/1/2017	Attempts	45, at South Dakota, 10/8/2016
—	Assists	1, seven times
—	Aces	—
—	Digs	5, at IUPUI, 10/18/2016
—	Solo Blocks	1, 10 times
—	Total Blocks	9, vs. South Dakota, 11/14/2015

- 2015, 2016-17 Summit League Academic Honor Roll
- 2016-17 Commissioner's List of Academic Excellence
- 2014 and 2015 Summit League Distinguished Scholar

CAREER STATS

Season	sp-mp	k	k/s	e	ta	pct	a	a/s	sa	sa/s	se	dig	d/s	re	bs	ba	tb	b/s	be	bhe	pts	pts/s
2014	4-4	1	0.25	2	6	-.167	0	0.00	0	0.00	0	3	0.75	0	0	2	2	0.50	0	0	2.0	0.50
2015	61-21	112	1.84	63	302	.162	4	0.07	0	0.00	1	17	0.28	1	2	27	29	0.48	2	0	127.5	2.08
2016	120-31	320	2.67	111	771	.271	3	0.03	0	0.00	0	49	0.41	1	8	54	62	0.52	4	1	355.0	2.96
2017	6-3	7	1.17	4	16	.188	0	0.00	0	0.00	0	0	0.00	0	0	0	0	0.00	0	0	7.0	1.17
TOTAL	191-59	440	2.30	180	1095	.237	7	0.04	0	0.00	1	69	0.36	2	10	83	93	0.49	6	1	491.5	2.57



NICOLE RIGHTNOWAR

Junior | 5-10
Temperance, Mich.
Bedford H.S.

OUTSIDE HITTER

SEASON HIGH	CATEGORY	CAREER HIGH
17, vs. Quinnipiac, 8/25/2017	Kills	25, at Omaha, 9/23/2016
47, vs. SIUE, 8/26/2017	Attempts	78, at Omaha, 9/23/2016
2, four times	Assists	3, two times
3, vs. SIUE, 8/26/2017	Aces	3, two times
15, vs. Quinnipiac, 8/25/2017	Digs	22, at South Dakota, 10/8/2016
1, vs. IUPUI, 8/29/2017	Solo Blocks	1, nine times
4, vs. IUPUI, 8/29/2017	Total Blocks	5, at Stony Brook, 9/17/2016

- 2016 Summit League All-League Team
- 2015 Summit League Freshman of the Year
- 2015 Summit League All-Freshman Team
- 2015, 2016-17 Summit League Academic Honor Roll
- Finished Third in 2014 Michigan High School Miss Volleyball voting

CAREER VS. WRIGHT STATE

Season	sp-mp	k	k/s	e	ta	pct	a	a/s	sa	sa/s	se	dig	d/s	re	bs	ba	tb	b/s	be	bhe	pts	pts/s
2015	4-1	7	1.75	3	26	.154	2	0.50	0	0.00	2	12	3.00	1	1	0	1	0.25	0	0	8.0	2.00
TOTAL	4-1	7	1.75	3	26	.154	2	0.50	0	0.00	2	12	3.00	1	1	0	1	0.25	0	0	8.0	2.00

SINGLE-MATCH HIGHS [all-time ranking]:

Kills: 7, vs Wright State, Sep 05, 2015

Attacks: 26, vs Wright State, Sep 05, 2015

Attack pct: .154, vs Wright State, Sep 05, 2015 (7-3-26)

Assists: 2, vs Wright State, Sep 05, 2015

Digs: 12, vs Wright State, Sep 05, 2015

Blocks: 1, vs Wright State, Sep 05, 2015

Block solo: 1, vs Wright State, Sep 05, 2015

SEASON STATS

Date	Opponent	sp	attack				set			serve				recept			dig	blocking			total	bhe	points	team hit%	score
			k	e	ta	pct	a	ta	pct	sa	se	ta	pct	re	ta	pct		bs	ba	bb					
Aug 25, 2017	QUINNIPAC	*5	17	3	40	.350	2	-	-	0	1	-	-	0	-	-	15	0	1	0	1.0	0	17.5	.251	3-2
Aug 26, 2017	SIUE	*4	12	9	47	.064	2	-	-	3	2	-	-	0	-	-	6	0	1	0	1.0	0	15.5	.131	1-3
Aug 26, 2017	TOLEDO	*4	12	4	44	.182	0	-	-	1	0	-	-	1	-	-	8	0	0	0	0.0	0	13.0	.269	3-1
Aug 29, 2017	IUPUI	*3	16	4	44	.273	0	-	-	2	3	-	-	0	-	-	14	1	3	0	4.0	0	20.5	.172	3-0
Sep 01, 2017	vs Bradley	*3	9	9	44	.000	0	-	-	0	0	-	-	0	-	-	7	0	0	0	0.0	0	9.0	.157	0-3
Sep 01, 2017	vs Navy	*3	8	5	26	.115	2	-	-	0	0	-	-	1	-	-	11	0	2	0	2.0	0	9.0	.103	0-3
Sep 02, 2017	at Ball State	*3	11	8	29	.103	2	-	-	1	0	-	-	0	-	-	14	0	2	0	2.0	0	13.0	.052	0-3
		25	85	42	274	.157	8	-	-	7	6	-	-	2	-	-	75	1	9	0	10.0	0	97.5		

Sets played: 25
Kills per set: 3.40
Assists per set: 0.32

Service aces per set: 0.28
Digs per set: 3.00
Blocks per set: 0.40

Points per set: 3.90

CAREER STATS

Season	sp-mp	k	k/s	e	ta	pct	a	a/s	sa	sa/s	se	dig	d/s	re	bs	ba	tb	b/s	be	bhe	pts	pts/s
2015	117-32	337	2.88	155	1074	.169	14	0.12	6	0.05	12	207	1.77	24	4	31	35	0.30	9	0	362.5	3.09
2016	118-31	396	3.36	164	1226	.189	19	0.16	18	0.15	33	329	2.79	39	4	31	35	0.30	4	2	433.5	3.67
2017	25-7	85	3.40	42	274	.157	8	0.32	7	0.28	6	75	3.00	2	1	9	10	0.40	0	0	97.5	3.88
TOTAL	260-70	818	3.15	361	2574	.178	41	0.16	31	0.12	51	611	2.35	65	9	71	80	0.31	13	2	893.5	3.43



SEASON HIGH	CATEGORY	CAREER HIGH
14, vs. Toledo, 8/26/2017	Kills	14, vs. Toledo, 8/26/2017
25, two times	Attempts	25, two times
2, vs. Toledo, 8/26/2017	Assists	2, vs. Toledo, 8/26/2017
	Aces	
2, vs. Quinnipiac, 8/25/2017	Digs	2, vs. Quinnipiac, 8/25/2017
2, vs. Navy, 9/1/2017	Solo Blocks	2, vs. Navy, 9/1/2017
11, vs. Quinnipiac, 8/25/2017	Total Blocks	11, vs. Quinnipiac, 8/25/2017

• 2015 Ohio High School Volleyball Coaches Association All-State Honorable Mention

SEASON STATS

Date	Opponent	sp	k	e	ta	pct	a	ta	pct	sa	se	ta	pct	re	ta	pct	dig	bs	ba	be	total	bhe	points	hit%	team score
Aug 25, 2017	QUINNIPIAC	*5	12	3	25	.360	1	-	-	0	0	-	-	0	-	-	2	0	11	0	11.0	0	17.5	.251	3-2
Aug 26, 2017	SIUE	*4	6	6	19	.000	0	-	-	0	0	-	-	0	-	-	0	1	4	1	5.0	0	9.0	.131	1-3
Aug 26, 2017	TOLEDO	*4	14	4	25	.400	2	-	-	0	0	-	-	0	-	-	0	0	3	1	3.0	0	15.5	.269	3-1
Aug 29, 2017	IUPUI	*3	3	2	10	.100	0	-	-	0	0	-	-	0	-	-	0	0	4	0	4.0	0	5.0	.172	3-0
Sep 01, 2017	vs Bradley	*3	4	1	9	.333	0	-	-	0	0	-	-	0	-	-	0	1	2	1	3.0	0	6.0	.157	0-3
Sep 01, 2017	vs Navy	*3	5	3	19	.105	1	-	-	0	0	-	-	0	-	-	1	2	2	0	4.0	0	8.0	.103	0-3
Sep 02, 2017	at Ball State	*3	4	1	9	.333	0	-	-	0	0	-	-	0	-	-	1	0	1	0	1.0	0	4.5	.052	0-3
		25	48	20	116	.241	4	-	-	0	0	-	-	0	-	-	4	4	27	3	31.0	0	65.5		

Sets played: 25
Kills per set: 1.92
Assists per set: 0.16

Digs per set: 0.16
Blocks per set: 1.24

Points per set: 2.62

CAREER STATS

Season	sp-mp	k	k/s	e	ta	pct	a	a/s	sa	sa/s	se	dig	d/s	re	bs	ba	tb	b/s	be	bhe	pts	pts/s
2017	25-7	48	1.92	20	116	.241	4	0.16	0	0.00	0	4	0.16	0	4	27	31	1.24	3	0	65.5	2.60
TOTAL	25-7	48	1.92	20	116	.241	4	0.16	0	0.00	0	4	0.16	0	4	27	31	1.24	3	0	65.5	2.60



**JE'BRIA
GREEN** **5**

Sophomore | 5-11
Fort Wayne, Ind.
Wayne H.S.

MIDDLE HITTER

SEASON HIGH	CATEGORY	CAREER HIGH
.....	Kills	5, two times
.....	Attempts	11, three times
.....	Assists	1, two times
.....	Aces
.....	Digs	3, at Toledo, 9/9/2016
.....	Solo Blocks	3, vs. Saint Francis (PA), 9/10/2016
.....	Total Blocks	6, vs. Saint Francis (PA), 9/10/2016

• All-Summit Athletic Conference in 2014 and 2015



**SYDNEY
COX** **12**

R-Sophomore | 6-2
McCordsville, Ind.
Cathedral H.S.

MIDDLE HITTER

SEASON HIGH	CATEGORY	CAREER HIGH
.....	Kills
.....	Attempts
.....	Assists
.....	Aces
.....	Digs
.....	Solo Blocks
.....	Total Blocks

- Will miss the 2017 season due to injury
- Used a redshirt season for the 2015 season
- Named to the 2014 AVCA Under Armour High School All-American Watch List

2017 FORT WAYNE SEASON STATS

RECORD:	OVERALL	HOME	AWAY	NEUTRAL
ALL GAMES	3-4	3-1	0-1	0-2
CONFERENCE	0-0	0-0	0-0	0-0
NON-CONFERENCE	3-4	3-1	0-1	0-2

#	Player	sp	Attack					Set		Serve			re	Dig		Blocking						points
			k	k/s	e	ta	pct	a	a/s	sa	se	sa/s		dig	dig/s	bs	ba	total	blk/s	be	bhe	
1	Madison Jaqua	15	1	0.07	3	6	.333	108	7.20	2	2	0.13	0	19	1.27	0	4	4	0.27	1	2	5.0
2	Julia Wayer	20	2	0.10	1	3	.333	5	0.25	1	6	0.05	2	58	2.90	0	0	0	0.00	0	0	3.0
3	Elizabeth Britner	25	7	0.28	2	19	.263	9	0.36	3	19	0.12	2	77	3.08	0	1	1	0.04	0	0	10.5
4	Victoria Mills	24	8	0.33	2	19	.316	169	7.04	5	13	0.21	1	40	1.67	0	3	3	0.12	2	1	14.5
6	Natalie Seiler	12	23	1.92	11	60	.200	0	0.00	0	3	0.00	0	14	1.17	1	9	10	0.83	1	0	28.5
7	Barbara Maximiano	5	4	0.80	4	20	.000	0	0.00	0	0	0.00	0	4	0.80	0	2	2	0.40	0	0	5.0
8	Elizabeth Fuerst	25	64	2.56	32	190	.168	3	0.12	6	7	0.24	5	46	1.84	1	18	19	0.76	1	0	80.0
9	Katie Crowe	25	82	3.28	46	233	.155	4	0.16	8	19	0.32	7	65	2.60	3	7	10	0.40	3	0	96.5
10	Lauren Hoffman	6	7	1.17	4	16	.188	0	0.00	0	0	0.00	0	0	0.00	0	0	0	0.00	0	0	7.0
11	Nicole Rightnowar	25	85	3.40	42	274	.157	8	0.32	7	6	0.28	2	75	3.00	1	9	10	0.40	0	0	97.5
13	Sydney Boerst	25	48	1.92	20	116	.241	4	0.16	0	0	0.00	0	4	0.16	4	27	31	1.24	3	0	65.5
TEAM		-	-	-	-	-	-	-	-	-	-	-	8	-	-	-	-	-	-	-	-	-
FORT WAYNE		25	331	13.24	167	956	.172	310	12.40	32	75	1.28	27	402	16.08	10	80	50.0	2.00	11	3	413.0
Opponents		25	298	11.92	113	867	.213	274	10.96	27	31	1.08	32	402	16.08	17	88	61.0	2.44	16	6	386.0

Team Statistics	FW	OPP
ATTACK		
Kills	331	298
Errors	167	113
Total Attacks	956	867
Attack Pct	.172	.213
Kills/Set	13.2	11.9
SET		
Assists	310	274
Assists/Set	12.4	11.0
SERVE		
Aces	32	27
Errors	75	31
Aces/Set	1.3	1.1
SERVE RECEPTIONS		
Errors	27	32
Errors/Set	1.1	1.3
DEFENSE		
Digs	402	402
Digs/Set	16.1	16.1
BLOCKING		
Block Solo	10	17
Block Assist	80	88
Total Blocks	50.0	61.0
Blocks/Set	2.0	2.4
Block Errors	11	16
Ball handling errors	3	6
ATTENDANCE		
Total	2007	408
Dates/Avg Per Date	4/502	1/408
Neutral site #/Avg	2/616	
Current win streak	0	-
Home win streak	2	-

Date	Opponent	Score	Score by set	Att.
%Aug 25	QUINNIPIAC	w 3-2	25-20,22-25,23-25,25-16,17-15	478
%Aug 26	SIUE	L 1-3	25-17,16-25,14-25,14-25	572
%Aug 26	TOLEDO	w 3-1	14-25,26-24,25-21,25-23	572
Aug 29	IUPUI	w 3-0	25-22,25-22,25-23	385
\$Sep 01	vs Bradley	L 0-3	20-25,17-25,19-25	616
\$Sep 01	vs Navy	L 0-3	23-25,19-25,13-25	616
\$Sep 02	at Ball State	L 0-3	21-25,19-25,22-25	408

% = Fort Wayne Invitational Presented by Hyatt Place
\$ = Ball State Active Ankle Challenge

Record in 3-set matches: 1-3
Record in 4-set matches: 1-1
Record in 5-set matches: 1-0

TV/RADIO ROSTER



#1 MADISON JAQUA
5-9 | Setter | Jr.
Kalamazoo, Michigan



#2 JULIA WAYER
5-5 | Libero | Fr.
McCordsville, Ind.



#3 LIZZIE BRITNER
5-8 | Libero | Jr.
Franklin, Indiana



#4 TORI MILLS
5-6 | Setter / DS | Jr.
Elkhart, Indiana



#5 JE'BRIA GREEN
5-11 | Middle Hitter | So.
Fort Wayne, Indiana



#6 NATALIE SEILER
6-3 | Middle Hitter | Sr.
Dayton, Ohio



#7 BARBIE MAXIMIANO
6-0 | Outside Hitter | Sr.
Florianópolis, Brazil



#8 LIZ FUERST
5-11 | Outside Hitter | So.
Arlington Heights, Illinois



#9 KATIE CROWE
5-10 | Outside Hitter | Fr.
Leo, Indiana



#10 LAUREN HOFFMAN
6-0 | Outside Hitter | Jr.
Monroeville, Indiana



#11 NICOLE RIGHTNOWAR
5-10 | Outside Hitter | Jr.
Temperance, Michigan



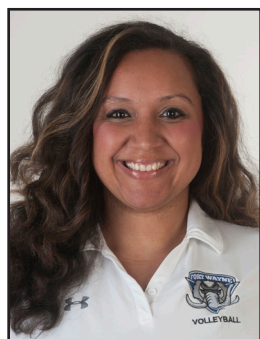
#12 SYDNEY COX
6-2 | Middle Hitter | R-So.
McCordsville, Indiana



#13 SYDNEY BOERST
6-0 | Middle Hitter | Fr.
Sylvania, Ohio



STEVE FLORIO
Head Coach (4th Season)
Saint Francis (PA) '98



JASMINE FULLOVE
Assistant Coach
Tennessee '06



LUKE FURMAN
Graduate Assistant Coach
IPFW '17

PRONUNCIATIONS

#1 Jaqua - Jake-way

#2 Wayer - where

#5 Je'Bria - Juh-Bree-Uh

#6 Seiler - CY-ler

#8 Fuerst - first

#9 Crowe - crow

#11 Rightnowar - Right-now-er

#13 Boerst - Boar-ST

Floor-E-o



Assistant Coach: Jasmine Fullove
Graduate Asst. Coach: Luke Furman

**Team Captains: Lauren Hoffman,
 Natalie Seiler and Madison Jaqua**

- During his time at Fort Wayne his recruits have earned numerous awards: AVCA All-Region First Team, AVCA All-American Honorable Mention, 2 AVCA All-Region Honorable Mentions, 2 Summit League Players of the Year, 2 SL Setters of the Year, 1 SL Defensive Player of the Year, 2 SL Newcomers of the Year, 20 All-League honorees and 7 SL All-Freshman Team selections.